

# Causal impact of masks, policies, behavior on early COVID-19 pandemic in the U.S.

---

Victor Chernozhukov  
Hiroyuki Kasahara  
Paul Schrimpf

The Institute for Fiscal Studies  
Department of Economics,  
UCL

**cemmap** working paper  
CWP24/20

# CAUSAL IMPACT OF MASKS, POLICIES, BEHAVIOR ON EARLY COVID-19 PANDEMIC IN THE U.S.

VICTOR CHERNOZHUKOV, HIROYUKI KASAHARA, AND PAUL SCHRIMPF

**ABSTRACT.** This paper evaluates the dynamic impact of various policies adopted by US states on the growth rates of confirmed Covid-19 cases and deaths as well as social distancing behavior measured by Google Mobility Reports, where we take into consideration people’s voluntarily behavioral response to new information of transmission risks. Our analysis finds that both policies and information on transmission risks are important determinants of Covid-19 cases and deaths and shows that a change in policies explains a large fraction of observed changes in social distancing behavior. Our counterfactual experiments suggest that nationally mandating face masks for employees on April 1st could have reduced the growth rate of cases and deaths by more than 0.1 in late April, and could have led to as much as 17 to 55 percent less deaths nationally by the end of May, which roughly translates into 17 to 55 thousand saved lives. Our estimates imply that removing non-essential business closures (while maintaining school closures, restrictions on movie theaters and restaurants) could have led to -20 to 60 percent more cases and deaths by the end of May. We also find that, without stay at home orders, cases (and hence deaths) would have been larger by 25 to 170 percent. Finally, not having implemented any policies could have led to at least a 7 fold increase with an uninformative upper bound in cases (and deaths) by the end of May in the US, with considerable uncertainty over the effects of school closures, which had little cross-sectional variation.

## 1. INTRODUCTION

Accumulating evidence suggests that various policies in the US have reduced social interactions and have slowed down the growth of Covid-19 infections.<sup>1</sup> An important outstanding issue is, however, how much of the observed slow down in the spread is attributable to the effect of policies as opposed to a voluntarily change in people’s behavior out of fear of being infected. This question is critical for evaluating the effectiveness of restrictive policies in the US relative to an alternative policy of just providing recommendations and information

---

*Date:* June 29, 2020; *First public* version posted to ArXiv: May 28, 2020.

*Key words and phrases.* Covid-19, causal impact, masks, non-essential business, policies, behavior.

We are grateful to Daron Acemoglu, V.V. Chari, Raj Chetty, Christian Hansen, Glenn Ellison, Ivan Fernandez-Val, David Green, Ido Rosen, Konstantin Sonin, James Stock, and Ivan Werning for helpful comments. We also thank Chiyong Ahn, Joshua Catalano, Jason Chau, Samuel Gyetvay, Sev Chenyu Hou, Jordan Hutchings, and Dongxiao Zhang for excellent research assistance. All mistakes are our own.

<sup>1</sup>See Courtemanche et al. (2020), Hsiang et al. (2020), Pei, Kandula, and Shaman (2020), Abouk and Heydari (2020), and Wright et al. (2020).

such as the one adopted by Sweden. More generally, understanding people’s dynamic behavioral response to policies and information is indispensable for properly evaluating the effect of policies on the spread of Covid-19.

This paper quantitatively assesses the impact of various policies adopted by US states on the spread of Covid-19, such as non-essential business closure and mandatory face masks, paying particular attention to how people adjust their behavior in response to policies as well as new information on cases and deaths.

We present a conceptual framework that spells out the causal structure on how the Covid-19 spread is dynamically determined by policies and human behavior. Our approach explicitly recognizes that policies not only directly affect the spread of Covid-19 (e.g., mask requirement) but also indirectly affect its spread by changing people’s behavior (e.g., stay at home order). It also recognizes that people react to new information on Covid-19 cases and deaths, and voluntarily adjust their behavior (e.g., voluntary social distancing and hand washing) even without any policy in place. Our casual model provides a framework to quantitatively decompose the growth of Covid-19 cases and deaths into three components: (1) direct policy effect, (2) policy effect through behavior, and (3) direct behavior effect in response to new information.<sup>2</sup>

Guided by the causal model, our empirical analysis examines how the weekly growth rates of confirmed Covid-19 cases and deaths are determined by (the lags of) policies and behavior using the US state-level data. To examine how policies and information affect people’s behavior, we also regress social distancing measures on policy and information variables. Our regression specification for case and death growths is explicitly guided by a SIR model although our causal approach does not hinge on the validity of a SIR model.

As policy variables, we consider mandatory face masks for employees in public businesses, stay at home orders (or shelter-in-place orders), closure of K-12 schools, closure of restaurants except take out, closure of movie theaters, and closure of non-essential businesses. Our behavior variables are four mobility measures that capture the intensity of visits to “transit,” “grocery,” “retail,” and “workplaces” from Google Mobility Reports. We take the lagged growth rate of cases and deaths and the log of lagged cases and deaths at both state-level and national-level as our measures of information on infection risks that affects people’s behavior. We also consider the growth rate of tests, month dummies, and the state-level characteristics (e.g., population size and total area) as confounders that have to be controlled for in order to identify the causal relationship between policy/behavior and the growth rate of cases and deaths.

Our key findings from regression analysis are as follows. We find that both policies and information on past cases and deaths are important determinants of people’s social

---

<sup>2</sup>The causal model is framed using the language of structural equations models and causal diagrams of econometrics (Wright (1928); Haavelmo (1944); Heckman and Vytlačil (2007); see Greenland, Pearl, and Robins (1999), Peters, Janzing, and Bernhard (2017), and Hernán and Robins (2020) for modern developments, especially in computer science and epidemiology), with natural unfolding potential outcomes representation (Rubin, 1974; Tinbergen, 1930; Neyman, 1925; Imbens and Rubin, 2015). As such it naturally converses in all languages for causal inference.

distancing behavior, where policy effects explain more than 50% of the observed decline in four behavior variables.<sup>3</sup> Our estimates suggest that there are both large policy effects and large behavior effects on the growth of cases and deaths. Except for mandatory masks, the effect of policies on cases and deaths is indirectly materialized through their impact on behavior; the effect of mandatory mask policy is direct without affecting behavior.

Using the estimated model, we evaluate the dynamic impact of the following counterfactual policies on Covid-19 cases and deaths: mandating face masks, allowing non-essential businesses to open, not implementing a stay at home order, and removing all policies. The counterfactual experiments show a large impact of those policies on the number of cases and deaths. They also highlight the importance of voluntary behavioral response to infection risks for evaluating the dynamic policy effects.

Figure 1 shows that nationally implementing mandatory face masks for employees in public businesses on April 1st would have reduced the growth rate of cases and deaths by more than 0.1 in late April. This leads to reductions of 25% and 35% in reported cases and deaths, respectively, by the end of May with a 90 percent confidence interval of [10, 45]% and [17, 55]%, which roughly implies that as many as 17 to 55 thousand lives could have been saved.<sup>4</sup> This finding is significant: given this potentially large benefit of reducing the spread of Covid-19, mandating masks is an attractive policy instrument especially because it involves relatively little economic disruption. These estimates contribute to the ongoing efforts of designing approaches to minimize risks from reopening (Stock, 2020a).

Figure 2 illustrates how allowing non-essential businesses to remain open could have affected the growth of cases. We estimate that non-essential business closures have a small impact on growth rates, with a 90% confidence interval that includes both negative and positive effects. When this effect on growth rates is converted to a change in levels, the point estimates indicate that keeping non-essential businesses open (other than movie theaters, gyms, and keeping restaurants in the “take-out” mode) could have increased cases and deaths by 15% (with a 90 percent confidence interval of  $-20\%$  to  $60\%$ ). Again, these estimates contribute to the ongoing efforts of evaluating various reopening approaches.

In Figure 3, we find that, without stay at home orders, the case growth rate would have been nearly 0.1 higher in late April. No stay at home orders could have led to 80% more cases by the start of June with a 90 percent confidence interval given by 25% to 170%. This result provides suggestive evidence that reopening via removal of stay at home orders could lead to a substantial increase in cases and deaths.

In our counterfactual experiment of removing all policies, we find that the results are sensitive to whether the number of past national cases/deaths is included in a specification or not. This sensitivity arises because there is little variation across states in the timing of

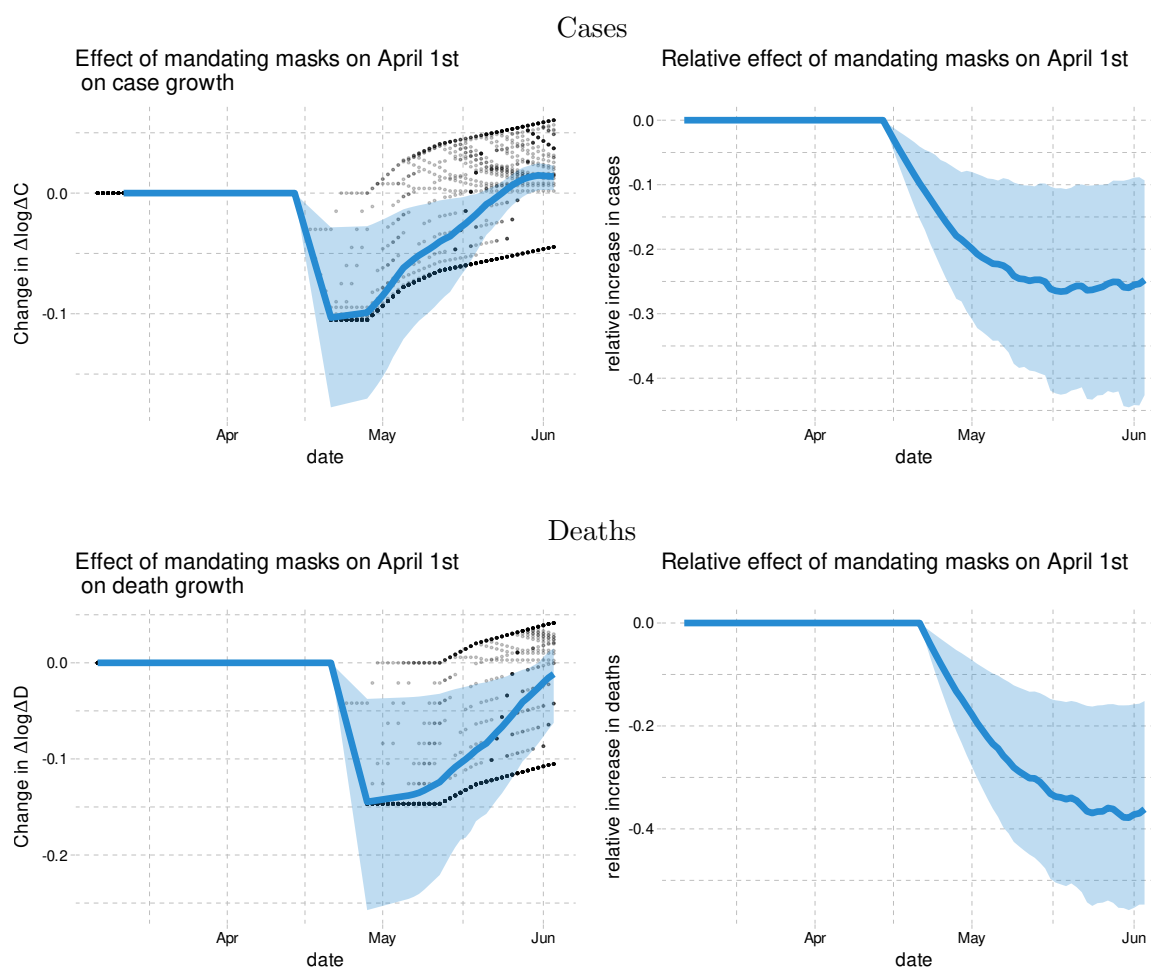
---

<sup>3</sup>The behavior accounts for the other half. This is in line with theoretical study by Gitmez, Sonin, and Wright (2020) that investigates the role of private behavior and negative external effects for individual decisions over policy compliance as well as information acquisition during pandemics.

<sup>4</sup>As of May 27, 2020, the US Centers for Disease Control and Prevention reports 99,031 deaths in the US.

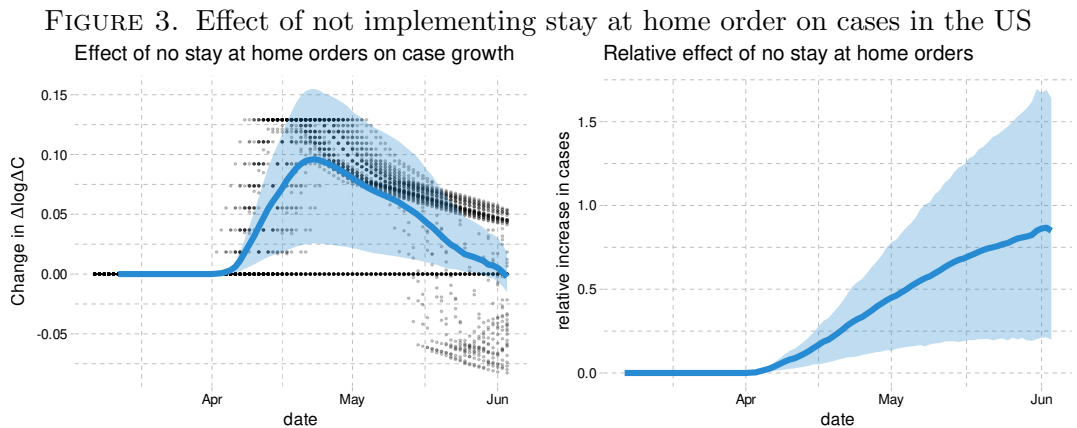
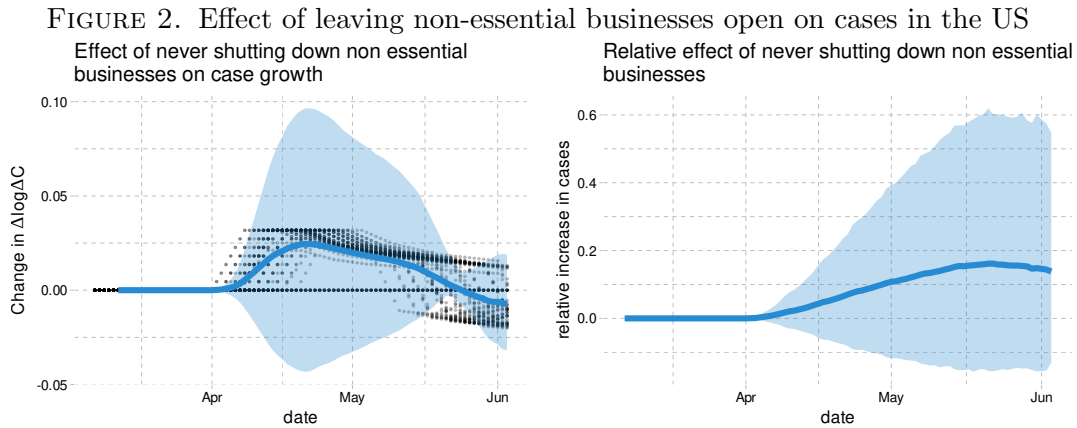
school closures. This makes the effect of school closures difficult to identify. In Figure 15, we show that without past national cases (which allow for greater attribution of effects to school closures), the number of cases by the end of May could have increased by at least 7 fold with a very large upper bound. On the other hand, as shown in Figure 16, under a specification with past national cases, our counterfactual experiment implies a 0 to 10 fold increase in cases by the end of May. This highlights the uncertainty regarding the impact of all policies versus private behavioral responses to information. Evaluation of re-opening policies needs to be aware of this uncertainty.

FIGURE 1. Effect of nationally mandating masks for employees on April 1st in the US



A growing number of other papers have examined the link between non-pharmaceutical interventions and Covid-19 cases.<sup>5</sup> Hsiang et al. (2020) estimate the effect of policies on

<sup>5</sup>We refer the reader to Avery et al. (2020) for a comprehensive review of a larger body of work researching Covid-19; here we focus on few quintessential comparisons on our work with other works that we are aware of.



Covid-19 case growth rates using data from the United States, China, Iran, Italy, France, and South Korea. In the United States, they find that the combined effect of all policies they consider on the growth rate is  $-0.347$  (0.061). Courtemanche et al. (2020) use US county level data to analyze the effect of interventions on case growth rates. They find that the combination of policies they study reduced growth rates by 9.1 percentage points 16-20 days after implementation, out of which 5.9 percentage points are attributed to shelter in place orders. Both Hsiang et al. (2020) and Courtemanche et al. (2020) adopted a reduced-form approach to estimate the total policy effect on case growth without using any social distancing behavior measures. In contrast, our study highlights the role of behavioral response to policies and information.

Existing evidence for the impact of social distancing policies on behavior in the US is mixed. Abouk and Heydari (2020) employ a difference-in-differences methodology to find that statewide stay-at-home orders have strong causal impacts on reducing social interactions. In contrast, using data from Google Mobility Reports, Maloney and Taskin (2020)

find that the increase in social distancing is largely voluntary and driven by information.<sup>6</sup> Another study by Gupta et al. (2020) also found little evidence that stay at home mandates induced distancing by using mobility measures from PlaceIQ and SafeGraph. Using data from SafeGraph, Andersen (2020) show that there has been substantial voluntary social distancing but also provide evidence that mandatory measures such as stay at home orders have been effective at reducing the frequency of visits outside of one’s home.

Pei, Kandula, and Shaman (2020) use county-level observations of reported infections and deaths in conjunction with mobility data from SafeGraph to estimate how effective reproductive numbers in major metropolitan areas change over time. They conduct simulation of implementing all policies 1-2 weeks earlier and found that it would have resulted in reducing the number of cases and deaths by more than half. However, their study does not explicitly analyze how policies are related to the effective reproduction numbers.

Epidemiologists use model simulations to predict how cases and deaths evolve for the purpose of policy recommendation. As reviewed by Avery et al. (2020), there exist substantial uncertainty in epidemiological parameters (see also Atkeson, 2020a; Stock, 2020b). Simulations are often done under strong assumptions about the impact of social distancing policies without connecting to the relevant data (e.g., Ferguson et al., 2020). Furthermore, simulated models do not take into account that people may limit their contact with other people in response to higher transmission risks.<sup>7</sup> When such a voluntary behavioral response is ignored, simulations would produce exponential spread of disease and would over-predict cases and deaths. Our counterfactual experiments illustrate the importance of this voluntary behavioral change.

Whether wearing masks in public place should be mandatory or not has been one of the most contested policy issues, where health authorities of different countries provide contradicting recommendations. Reviewing evidence, Greenhalgh et al. (2020) recognizes that there is no randomized controlled trial evidence for the effectiveness of face masks, but they state “indirect evidence exists to support the argument for the public wearing masks in the Covid-19 pandemic.”<sup>8</sup> Howard et al. (2020) also review available medical evidence and conclude that “mask wearing reduces the transmissibility per contact by reducing transmission of infected droplets in both laboratory and clinical contexts.” The laboratory findings in Hou et al. (2020) suggest that the nasal cavity may be the initial site of infection followed by aspiration to the lung, supporting the argument “for the widespread use of masks to prevent aerosol, large droplet, and/or mechanical exposure to the nasal passages.”

Given the lack of experimental evidence on the effect of masks, conducting observational studies is useful and important. To the best of our knowledge, our paper is the first empirical

---

<sup>6</sup>Specifically, they find that of the 60 percentage point drop in workplace intensity, 40 percentage points can be explained by changes in information as proxied by case numbers, while roughly 8 percentage points can be explained by policy changes.

<sup>7</sup>See Atkeson (2020b) and Stock (2020b) for the implications of the SIR model for COVID-19 in the US. Fernández-Villaverde and Jones (2020) estimate a SIRD model in which time-varying reproduction numbers depend on the daily deaths to capture feedback from daily deaths to future behavior and infections.

<sup>8</sup>The virus remains viable in the air for several hours, for which surgical masks may be effective. Also, a substantial fraction of individual who are infected become infectious before showing symptom onset.

study that shows the effectiveness of mask mandates on reducing the spread of Covid-19 by analyzing the US state-level data. This finding corroborates and is complementary to the medical observational evidence in Howard et al. (2020). Analyzing mitigation measures in New York, Wuhan, and Italy, Zhang et al. (2020b) conclude that mandatory face coverings substantially reduced infections. Abaluck et al. (2020) find that the growth rates of cases and of deaths in countries with pre-existing norms that sick people should wear masks are lower by 8 to 10% than those rates in countries with no pre-existing mask norms.

We conclude the introduction by stating that our empirical results contribute to informing the economic-epidemiological models that combine economic models with variants of SIR models to evaluate the efficiency of various economic policies aimed at gradual “reopening” of various sectors of economy. For example, the estimated effects of masks, stay-home mandates, and various other policies on behavior, and of behavior on infection can serve as useful inputs and validation checks in the calibrated macro, sectoral, and micro models (see, e.g., Alvarez, Argente, and Lippi (2020); Baqaee et al. (2020); Fernández-Villaverde and Jones (2020); Acemoglu et al. (2020); Keppo et al. (2020); McAdams (2020) and references therein.) Furthermore, the causal framework developed in this paper could be applicable, with appropriate extensions, to the impact of policies on economic outcomes replacing health outcomes (see, e.g., Chetty et al. (2020); Coibion, Gorodnichenko, and Weber (2020)).

## 2. THE CAUSAL MODEL FOR THE EFFECT OF POLICIES, BEHAVIOR, AND INFORMATION ON GROWTH OF INFECTION

**2.1. The Causal Model and Its Structural Equation Form.** We introduce our approach through the Wright-style causal diagram shown in Figure 4. The diagram describes how policies, behavior, and information interact together:

- The *forward* health outcome,  $Y_{i,t+\ell}$ , is determined last, after all other variables have been determined;
- The adopted policies,  $P_{it}$ , affect health outcome  $Y_{i,t+\ell}$  either directly, or indirectly by altering human behavior  $B_{it}$ ;
- Information variables,  $I_{it}$ , such as lagged values of outcomes can affect human behavior and policies, as well as outcomes;
- The confounding factors  $W_{it}$ , which vary across states and time, affect all other variables.

The index  $i$  describes observational unit, the state, and  $t$  and  $t + \ell$  describe the time, where  $\ell$  represents the time lag between infection and case confirmation or death.

We begin to introduce more context by noting that our main outcomes of interest are the growth rates in Covid-19 cases and deaths; behavioral variables include proportion of time spent in transit or shopping and others; policy variables include stay-at-home orders and school and business closures; the information variables include lagged values of outcome. We provide a detailed description of these variables and their timing in the next section.



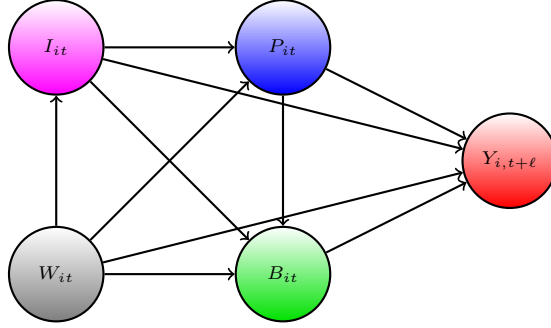


FIGURE 4. P. Wright type causal path diagram for our model.

The causal structure allows for the effect of the policy to be either direct or indirect – through-behavior or through dynamics; and all of these effects are not mutually exclusive. The structure also allows for changes in behavior to be brought by change in policies and information. These are all realistic properties that we expect from the contextual knowledge of the problem. Policies, such as closures of schools, non-essential business, and restaurants, alter and constrain behavior in strong ways. In contrast, policies, such as mandating employees to wear masks, can potentially affect the Covid-19 transmission directly. The information variables, such as recent growth in the number of cases, can cause people to spend more time at home, regardless of adopted state policies; these changes in behavior in turn affect the transmission of Covid-19.

The causal ordering induced by this directed acyclical graph is determined by the following timing sequence:

- (1) information and confounders get determined at  $t$ ,
- (2) policies are set in place, given information and confounders at  $t$ ;
- (3) behavior is realized, given policies, information, and confounders at  $t$ ;
- (4) outcomes get realized at  $t+l$  given policies, behavior, information, and confounders.

The model also allows for direct dynamic effects of information variables on the outcome through autoregressive structures that capture persistence in growth patterns. As further highlighted below, realized outcomes may become new information for future periods, inducing dynamics over multiple periods.

Our quantitative model for causal structure in Figure 4 is given by the following econometric structural equation model:

$$\begin{aligned} Y_{i,t+l}(b, p, \iota) &:= \alpha' b + \pi' p + \mu' \iota + \delta_Y' W_{it} + \varepsilon_{it}^y, \\ B_{it}(p, \iota) &:= \beta' p + \gamma' \iota + \delta_B' W_{it} + \varepsilon_{it}^b, \end{aligned} \tag{SEM}$$

which is a collection of functional relations with stochastic shocks, decomposed into observable part  $\delta'W$  and unobservable part  $\varepsilon$ . The terms  $\varepsilon_{it}^y$  and  $\varepsilon_{it}^b$  are the centered stochastic shocks that obey the orthogonality restrictions posed below.

The policies can be modeled via a linear form as well,

$$P_{it}(\iota) := \eta' \iota + \delta'_P W_{it} + \varepsilon_{it}^p, \quad (\text{P})$$

although linearity is not critical.<sup>9</sup>

The orthogonality restrictions on the stochastic components are as follows:

$$\begin{aligned} \varepsilon_{it}^y &\perp (\varepsilon_{it}^b, \varepsilon_{it}^p, W_{it}, I_{it}), \\ \varepsilon_{it}^b &\perp (\varepsilon_{it}^p, W_{it}, I_{it}), \\ \varepsilon_{it}^p &\perp (W_{it}, I_{it}), \end{aligned} \quad (\text{O})$$

where we say that  $V \perp U$  if  $EVU = 0$ . This is a standard way of representing restrictions on errors in structural equation modeling.<sup>1011</sup>

The observed variables are generated by setting  $\iota = I_{it}$  and propagating the system from the last equation to the first:

$$\begin{aligned} Y_{i,t+\ell} &:= Y_{i,t+\ell}(B_{it}, P_{it}, I_{it}), \\ B_{it} &:= B_{it}(P_{it}, I_{it}), \\ P_{it} &:= P_{it}(I_{it}). \end{aligned}$$

The system above together with orthogonality restrictions (O) implies the following collection of stochastic equations for realized variables:

$$\begin{aligned} Y_{i,t+\ell} &= \alpha' B_{it} + \pi' P_{it} + \mu' I_{it} + \delta'_Y W_{it} + \varepsilon_{it}^y, & \varepsilon_{it}^y &\perp B_{it}, P_{it}, I_{it}, W_{it} & (\text{BPI} \rightarrow \text{Y}) \\ B_{it} &= \beta' P_{it} + \gamma' I_{it} + \delta'_B W_{it} + \varepsilon_{it}^b, & \varepsilon_{it}^b &\perp P_{it}, I_{it}, W_{it} & (\text{PI} \rightarrow \text{B}) \\ P_{it} &= \eta' I_{it} + \delta'_P W_{it} + \varepsilon_{it}^p, & \varepsilon_{it}^p &\perp I_{it}, W_{it} & (\text{I} \rightarrow \text{P}) \end{aligned}$$

and

$$Y_{i,t+\ell} = (\alpha' \beta' + \pi') P_{it} + (\alpha' \gamma' + \mu') I_{it} + \bar{\delta}' W_{it} + \bar{\varepsilon}_{it}, \quad \bar{\varepsilon}_{it} \perp P_{it}, I_{it}, W_{it}. \quad (\text{PI} \rightarrow \text{Y})$$

These equations form the basis of our empirical analysis.

As discussed below, the information variable includes case growth. Therefore, an orthogonality restriction  $\varepsilon_{it}^y \perp P_{it}$  holds if the government does not have knowledge on future case growth beyond what is predicted by today's case growth, policies, behavior, and confounders; even when the government has some knowledge on  $\varepsilon_{it}^y$ , the orthogonality restriction may hold if there is a time lag for the government to implement its policies based on  $\varepsilon_{it}^y$ .

<sup>9</sup>Under some additional independence conditions, this can be replaced by an arbitrary non-additive function  $P_{it}(\iota) = p(\iota, W_{it}, \varepsilon_{it}^p)$ , such that the unconfoundedness condition stated in the next footnote holds.

<sup>10</sup>An alternative useful starting point is to impose the Rubin-Rosenbaum type unconfoundedness condition:

$$Y_{i,t+\ell}(\cdot, \cdot, \cdot) \perp\!\!\!\perp (P_{it}, B_{it}, I_{it}) \mid W_{it}, B_{it}(\cdot, \cdot) \perp\!\!\!\perp (P_{it}, I_{it}) \mid W_{it}, P_{it}(\cdot) \perp\!\!\!\perp I_{it} \mid W_{it},$$

which imply, with treating stochastic errors as independent additive components, the orthogonal conditions stated above.

<sup>11</sup>The structural equations of this form are connected to triangular structural equation models, appearing in microeconometrics and macroeconometrics (SVARs), going back to the work of Strotz and Wold (1960).

The orthogonality condition in (PI→Y) is weaker than the orthogonality conditions in (BPI→Y)-(PI→B) in that the former is implied by the latter but not vice versa. The system over-identifies the regression coefficients because  $(\alpha'\beta' + \pi')$  and  $(\alpha'\gamma' + \mu')$  in (PI→Y) can be also identified from  $\alpha', \pi', \mu', \beta'$ , and  $\gamma'$  in (BPI→Y)-(PI→B). Comparing the estimates of  $(\alpha'\beta' + \pi')$  and  $(\alpha'\gamma' + \mu')$  from (PI→Y) with those implied by the estimates of  $\alpha', \pi', \mu', \beta'$ , and  $\gamma'$  from (BPI→Y)-(PI→B) provides a useful specification test.

**Identification and Parameter Estimation.** The orthogonality equations imply that these are all projection equations, and the parameters of SEM are identified by the parameters of these regression equation, provided the latter are identified by sufficient joint variation of these variables across states and time.

The last point can be stated formally as follows. Consider the previous system of equations, after partialling out the confounders:

$$\begin{aligned} \tilde{Y}_{i,t+\ell} &= \alpha' \tilde{B}_{it} + \pi' \tilde{P}_{it} + \mu' \tilde{I}_{it} + \varepsilon_{it}^y, & \varepsilon_{it}^y &\perp \tilde{B}_{it}, \tilde{P}_{it}, \tilde{I}_{it}, \\ \tilde{B}_{it} &= \beta' \tilde{P}_{it} + \gamma' \tilde{I}_{it} + \varepsilon_{it}^b, & \varepsilon_{it}^b &\perp \tilde{P}_{it}, \tilde{I}_{it}, \\ \tilde{P}_{it} &= \eta' \tilde{I}_{it} + \varepsilon_{it}^p, & \varepsilon_{it}^p &\perp \tilde{I}_{it} \end{aligned} \quad (1)$$

where  $\tilde{V}_{it} = V_{it} - W_{it}' \mathbf{E}[W_{it} W_{it}']^{-1} \mathbf{E}[W_{it} V_{it}]$  denotes the residual after removing the orthogonal projection of  $V_{it}$  on  $W_{it}$ . The residualization is a linear operator, implying that (1) follows immediately from above. The parameters of (1) are identified as projection coefficients in these equations, provided that residualized vectors appearing in each of the equations have non-singular variance, that is

$$\text{Var}(\tilde{P}'_{it}, \tilde{B}'_{it}, \tilde{I}'_{it}) > 0, \quad \text{Var}(\tilde{P}'_{it}, \tilde{I}'_{it}) > 0, \quad \text{and} \quad \text{Var}(\tilde{I}'_{it}) > 0. \quad (2)$$

Our main estimation method is the standard correlated random effects estimator, where the random effects are parameterized as functions of observable characteristic,  $W_{it}$ , which include both state-level and time random effects. The state-level random effects are modeled as a function of state level characteristics, and the time random effects are modeled by including month dummies and their interactions with state level characteristics. The stochastic shocks  $\{\varepsilon_{it}\}_{t=1}^T$  are treated as independent across states  $i$  and can be arbitrarily dependent across time  $t$  within a state.

A secondary estimation method is the fixed effects estimator, where  $W_{it}$  includes latent (unobserved) state level effects  $W_i$  and and time level effects  $W_t$ , which must be estimated from the data. This approach is much more demanding of the data and relies on long cross-sectional and time histories. When histories are relatively short, large biases emerge and they need to be removed using debiasing methods. In our context, debiasing materially changes the estimates, often changing the sign.<sup>12</sup> However, we find the debiased fixed effect estimates are qualitatively and quantitatively similar to the correlated random effects estimates. Given this finding, we chose to focus on the latter, as it is a more standard and

<sup>12</sup>This is a pre-cautionary message that may be useful for other researchers using fixed effects estimators in the context of Covid-19 analysis. We recommend using debiased fixed effects estimators, see e.g., Chen, Chernozhukov, and Fernández-Val (2019) for expository treatment.

familiar method, and report the former estimates in the supplementary materials for this paper.<sup>13</sup>

**2.2. Information Structures and Induced Dynamics.** We consider three examples of information structures: Information variable is a function of time:

$$I_{it} = g(t);$$

Information variable is lagged value of outcome:

$$I_{it} = Y_{it};$$

and the final one:

(I) Information variables include time, lagged and integrated values of outcome:

$$I_{it} = \left( g(t), Y_{it}, \sum_{m=0}^{t/\ell} Y_{i,t-\ell m} \right)',$$

with the convention that  $Y_{it} = 0$  for  $t \leq 0$ .

The first information structure captures the basic idea that, as individuals discover more information about covid over time, they adapt safer modes of behavior (stay at home, wear masks, wash hands). Under this structure, information is common across states and exogenously evolves over time, independent of the number of cases. The second structure arises from considering autoregressive components and captures people's behavioral response to information on cases in the state they reside. Specifically, we model persistence in growth rate,  $Y_{i,t+\ell}$ , through an AR(1) model, which leads to  $I_{it} = Y_{it}$ . This provides useful *local*, state-specific, information about the forward growth rate and people may adjust their behavior to safer modes when they see a high value. We model this adjustment via the term  $\gamma' I_{it}$  in the behavior equation. The third information structure is the combination of the first two structures plus an additional term representing the (log of) total number of new cases in the state. We use this information structure in our empirical specification. In this structure, people respond to both global information, captured by a function of time such as month dummies, and local information sources, captured by the local growth rate and the total number of cases. The last element of the information set can be thought of as a local stochastic trend in cases.

All of these examples fold into a specification of the form:

$$I_{it} := I_{it}(I_{i,t-\ell}, Y_{it}, t), \quad t = 1, \dots, T, \quad (\text{I})$$

with the initialization  $I_{i0} = 0$  and  $Y_{i0} = 0$ .<sup>14</sup>

<sup>13</sup>The similarity of the debiased fixed effects and correlated random effects served as a useful specification check. Moreover, using the fixed effects estimators only yielded minor gains in predictive performances, as judging by the adjusted  $R^2$ 's, providing another useful specification check.

<sup>14</sup>This initialization is appropriate in our context for analyzing pandemics from the very beginning, but other initializations could be appropriate in other contexts. The lagged values of behavior variable may be also included in the information set.

With any structure of this form, realized outcomes may become new information for future periods, inducing a dynamical system over multiple periods. We show the resulting dynamical system in a causal diagram of Figure 5. Specification of this system is useful for studying delayed effects of policies and behaviors and in considering the counterfactual policy analysis.

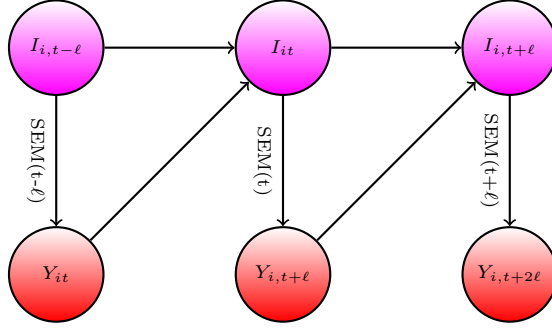


FIGURE 5. Dynamic System Induced by Information Structure and SEM

**2.3. Outcome and Key Confounders via SIR model.** Letting  $C_{it}$  denote the cumulative number of confirmed cases in state  $i$  at time  $t$ , our outcome

$$Y_{it} = \Delta \log(\Delta C_{it}) := \log(\Delta C_{it}) - \log(\Delta C_{i,t-7}) \quad (3)$$

approximates the weekly growth rate in new cases from  $t-7$  to  $t$ .<sup>15</sup> Here  $\Delta$  denotes the differencing operator over 7 days from  $t$  to  $t-7$ , so that  $\Delta C_{it} := C_{it} - C_{i,t-7}$  is the number of new confirmed cases in the past 7 days.

We chose this metric as this is the key metric for policy makers deciding when to relax Covid mitigation policies. The U.S. government’s guidelines for state reopening recommend that states display a “downward trajectory of documented cases within a 14-day period” (White House, 2020). A negative value of  $Y_{it}$  is an indication of meeting this criteria for reopening. By focusing on weekly cases rather than daily cases, we smooth idiosyncratic daily fluctuations as well as periodic fluctuations associated with days of the week.

Our measurement equation for estimating equations (BPI→Y) and (PI→Y) will take the form:

$$\Delta \log(\Delta C_{it}) = X'_{i,t-14} \theta - \gamma + \delta_T \Delta \log(T_{it}) + \epsilon_{it}, \quad (\text{M-C})$$

where  $i$  is state,  $t$  is day,  $C_{it}$  is cumulative confirmed cases,  $T_{it}$  is the number of tests over 7 days,  $\Delta$  is a 7-days differencing operator,  $\epsilon_{it}$  is an unobserved error term.  $X_{i,t-14}$  collects other behavioral, policy, and confounding variables, depending on whether we estimate (BPI→Y) or (PI→Y), where the lag of 14 days captures the time lag between infection and confirmed case (see the Appendix A.6). Here

$$\Delta \log(T_{it}) := \log(T_{it}) - \log(T_{i,t-7})$$

<sup>15</sup>We may show that  $\log(\Delta C_{it}) - \log(\Delta C_{i,t-7})$  approximates the average growth rate of cases from  $t-7$  to  $t$ .

is the key confounding variable, derived from considering the SIR model below. We describe other confounders in the empirical section.

Our main estimating equation (M-C) is motivated by a variant of SIR model, where we add confirmed cases and infection detection via testing. Let  $S$ ,  $\mathcal{I}$ ,  $R$ , and  $D$  denote the number of susceptible, infected, recovered, and dead individuals in a given state. Each of these variables are a function of time. We model them as evolving as

$$\dot{S}(t) = -\frac{S(t)}{N}\beta(t)\mathcal{I}(t) \quad (4)$$

$$\dot{\mathcal{I}}(t) = \frac{S(t)}{N}\beta(t)\mathcal{I}(t) - \gamma\mathcal{I}(t) \quad (5)$$

$$\dot{R}(t) = (1 - \kappa)\gamma\mathcal{I}(t) \quad (6)$$

$$\dot{D}(t) = \kappa\gamma\mathcal{I}(t) \quad (7)$$

where  $N$  is the population,  $\beta(t)$  is the rate of infection spread,  $\gamma$  is the rate of recovery or death, and  $\kappa$  is the probability of death conditional on infection.

Confirmed cases,  $C(t)$ , evolve as

$$\dot{C}(t) = \tau(t)\mathcal{I}(t), \quad (8)$$

where  $\tau(t)$  is the rate that infections are detected.

Our goal is to examine how the rate of infection  $\beta(t)$  varies with observed policies and measures of social distancing behavior. A key challenge is that we only observed  $C(t)$  and  $D(t)$ , but not  $\mathcal{I}(t)$ . The unobserved  $\mathcal{I}(t)$  can be eliminated by differentiating (8) and using (5) as

$$\frac{\ddot{C}(t)}{\dot{C}(t)} = \frac{S(t)}{N}\beta(t) - \gamma + \frac{\dot{\tau}(t)}{\tau(t)}. \quad (9)$$

We consider a discrete-time analogue of equation (9) to motivate our empirical specification by relating the detection rate  $\tau(t)$  to the number of tests  $T_{it}$  while specifying  $\frac{S(t)}{N}\beta(t)$  as a linear function of variables  $X_{i,t-14}$ . This results in

$$\underbrace{\Delta \log(\Delta C_{it})}_{\frac{\ddot{C}(t)}{\dot{C}(t)}} = \underbrace{X'_{i,t-14}\theta + \epsilon_{it}}_{\frac{S(t)}{N}\beta(t) - \gamma} + \underbrace{\delta_T \Delta \log(T)_{it}}_{\frac{\dot{\tau}(t)}{\tau(t)}}$$

which is equation (M-C), where  $X_{i,t-14}$  captures a vector of variables related to  $\beta(t)$ .

**STRUCTURAL INTERPRETATION.** Early in the pandemic, when the number of susceptibles is approximately the same as the entire population, i.e.  $S_{it}/N_{it} \approx 1$ , the component  $X'_{i,t-14}\theta$  is the projection of infection rate  $\beta_i(t)$  on  $X_{i,t-14}$  (policy, behavioral, information, and confounders other than testing rate), provided the stochastic component  $\epsilon_{it}$  is orthogonal to  $X_{i,t-14}$  and the testing variables:

$$\beta_i(t)S_{it}/N_{it} - \gamma = X'_{i,t-14}\theta + \epsilon_{it}, \quad \epsilon_{it} \perp X_{i,t-14}.$$

**2.4. Growth Rate in Deaths as Outcome.** By differentiating (7) and (8) with respect to  $t$  and using (9), we obtain

$$\frac{\ddot{D}(t)}{\dot{D}(t)} = \frac{\ddot{C}(t)}{\dot{C}(t)} - \frac{\dot{\tau}(t)}{\tau(t)} = \frac{S(t)}{N} \beta(t) - \gamma. \quad (10)$$

Our measurement equation for the growth rate of deaths is based on equation (10) but account for a 21 day lag between infection and death as

$$\Delta \log(\Delta D_{it}) = X'_{i,t-21} \theta + \epsilon_{it}, \quad (\text{M-D})$$

where

$$\Delta \log(\Delta D_{it}) := \log(\Delta D_{it}) - \log(\Delta D_{i,t-7}) \quad (11)$$

approximates the weekly growth rate in deaths from  $t - 7$  to  $t$  in state  $i$ .

### 3. DECOMPOSITION AND COUNTERFACTUAL POLICY ANALYSIS

**3.1. Total Change Decomposition.** Given the SEM formulation above, we can carry out the following decomposition analysis, after removing the effects of confounders. For example, we can decompose the total change  $E\tilde{Y}_{i,t+\ell} - E\tilde{Y}_{io}$  in the expected outcome, measured at two different time points  $t + \ell$  and  $o$  into a sum of three components:

$$\begin{aligned} \underbrace{E\tilde{Y}_{i,t+\ell} - E\tilde{Y}_{io}}_{\text{Total Change}} &= \underbrace{\alpha' \beta' (E\tilde{P}_{it} - E\tilde{P}_{io})}_{\text{Policy Effect via Behavior}} \\ &+ \underbrace{\pi' (E\tilde{P}_{it} - E\tilde{P}_{io})}_{\text{Direct Policy Effect}} \\ &+ \underbrace{\alpha' \gamma' (E\tilde{I}_{it} - E\tilde{I}_{io}) + \mu' (E\tilde{I}_{it} - E\tilde{I}_{io})}_{\text{Dynamic Effect}} \\ &=: \text{PEB}_t + \text{PED}_t + \text{DynE}_t, \end{aligned} \quad (12)$$

where the first two components are the immediate effect and the third is the delayed or dynamic effect.

In the three examples of information structure given earlier, we have the following forms for the dynamic effect: for the trend model,

$$\text{DynE}_t = (\gamma\alpha + \mu)\Delta g_t, \quad \Delta g_t = (g(t) - g(t - \ell))$$

and for the lag model,

$$\text{DynE}_t = \sum_{m=1}^{t/\ell} (\gamma\alpha + \mu)^m (\text{PEB}_{t-m\ell} + \text{PED}_{t-m\ell}),$$

interpreting  $t/\ell$  as  $\lfloor t/\ell \rfloor$ . For the general model we use, the dynamic effect is

$$(I3) \quad \text{DynE}_t = \sum_{m=0}^{t/\ell} (((\gamma\alpha)_2 + \mu_2 + (\gamma\alpha)_3 + \mu_3)^m ((\gamma\alpha)_1 + \mu_1)\Delta g_t \\ + \sum_{m=1}^{t/\ell} ((\gamma\alpha)_2 + \mu_2 + (\gamma\alpha)_3 + \mu_3)^m (\text{PEB}_{t-m\ell} + \text{DPE}_{t-m\ell}) \\ + \sum_{m=1}^{t/\ell-1} ((\gamma\alpha)_3 + \mu_3)^m (\text{PEB}_{t-(m+1)\ell} + \text{DPE}_{t-(m+1)\ell}).$$

The effects can be decomposed into (a) delayed policy effects via behavior by summing terms containing  $PEB$ , (b) delayed policy effects via direct impact by summing terms containing  $DPE$ , (c) pure behavior effects, and (d) pure dynamic feedback effects.

**3.2. Counterfactuals.** We also consider simple counterfactual exercises, where we examine the effects of setting a sequence of counterfactual policies for each state:

$$\{P_{it}^*\}_{t=1}^T, \quad i = 1, \dots, N.$$

We assume that the SEM remains invariant, except of course for the policy equation.<sup>16</sup> Given the policies we propagate the dynamic equations:

$$\begin{aligned} Y_{i,t+\ell}^* &:= Y_{i,t+\ell}(B_{it}^*, P_{it}^*, I_{it}^*), \\ B_{it}^* &:= B_{it}(P_{it}^*, I_{it}^*), \\ I_{it}^* &:= I_{it}(I_{i,t-\ell}^*, Y_{it}^*, t), \end{aligned} \quad (\text{CEF-SEM})$$

with the initialization  $I_{i0}^* = 0$ ,  $Y_{i0}^* = 0$ ,  $B_{i0}^* = 0$ ,  $P_{i0}^* = 0$ . In stating this counterfactual system of equations, we make the following invariance assumption

INVARIANCE ASSUMPTION. The equations of (CF-SEM) remain exactly of the same form as in the (SEM) and (I). That is, under the policy intervention  $\{P_{it}^*\}$ , parameters and stochastic shocks in (SEM) and (I) remain the same as under the original policy intervention  $\{P_{it}\}$ .

Let  $\mathcal{P}Y_{i,t+\ell}^*$  and  $\mathcal{P}Y_{i,t+\ell}$  denote the predicted values produced by working with the counterfactual system (CEF-SEM) and the factual system (SEM):

$$\mathcal{P}Y_{i,t+\ell}^* = (\alpha'\beta' + \pi')P_{it}^* + (\alpha'\gamma' + \mu')I_{it}^* + \bar{\delta}'W_{it},$$

$$\mathcal{P}Y_{i,t+\ell} = (\alpha'\beta' + \pi')P_{it} + (\alpha'\gamma' + \mu')I_{it} + \bar{\delta}'W_{it}.$$

In generating these predictions, we make the assumption of invariance stated above.

<sup>16</sup>It is possible to consider counterfactual exercises in which policy responds to information through the policy equation if we are interested in endogenous policy responses to information. Although this is beyond the scope of the current paper, counterfactual experiments with endogenous government policy would be important, for example, to understand the issues related to the lagged response of government policies to higher infection rates due to incomplete information.



Then we can write the difference into the sum of three components:

$$\begin{aligned}
\underbrace{\mathcal{P}Y_{i,t+\ell}^* - \mathcal{P}Y_{i,t+\ell}}_{\text{Predicted CF Change}} &= \underbrace{\alpha' \beta' (P_{it}^* - P_{it})}_{\text{CF Policy Effect via Behavior}} + \underbrace{\pi' (P_{it}^* - P_{it})}_{\text{CF Direct Effect}} \\
&\quad + \underbrace{\alpha' \gamma' (I_{it}^* - I_{it}) + \mu' (I_{it}^* - I_{it})}_{\text{CF Dynamic Effect}} \\
&=: \text{PEB}_{it}^* + \text{PED}_{it}^* + \text{DynE}_{it}^*. \tag{13}
\end{aligned}$$

Similarly to what we had before, the counterfactual dynamic effects take the form:

$$\begin{aligned}
\text{(I) DynE}_{it}^* &= \sum_{m=1}^{t/\ell} ((\gamma\alpha)_2 + \mu_2 + (\gamma\alpha)_3 + \mu_3)^m (\text{PEB}_{i,t-m\ell}^* + \text{DPE}_{i,t-m\ell}^*) \\
&\quad + \sum_{m=1}^{t/\ell-1} ((\gamma\alpha)_3 + \mu_3)^m (\text{PEB}_{i,t-(m+1)\ell}^* + \text{DPE}_{i,t-(m+1)\ell}^*),
\end{aligned}$$

interpreting  $t/\ell$  as  $\lfloor t/\ell \rfloor$ . The effects can be decomposed into (a) delayed policy effects via behavior by summing terms containing  $PEB$ , (b) delayed policy effects via direct impact by summing terms containing  $DPE$ , (c) pure behavior effects, and (d) pure dynamic feedback effects.

#### 4. EMPIRICAL ANALYSIS

**4.1. Data.** Our baseline measures for daily Covid-19 cases and deaths are from The New York Times (NYT). When there are missing values in NYT, we use reported cases and deaths from JHU CSSE, and then the Covid Tracking Project. The number of tests for each state is from Covid Tracking Project. As shown in Figure 21 in the appendix, there was a rapid increase in testing in the second half of March and then the number of tests increased very slowly in each state in April.

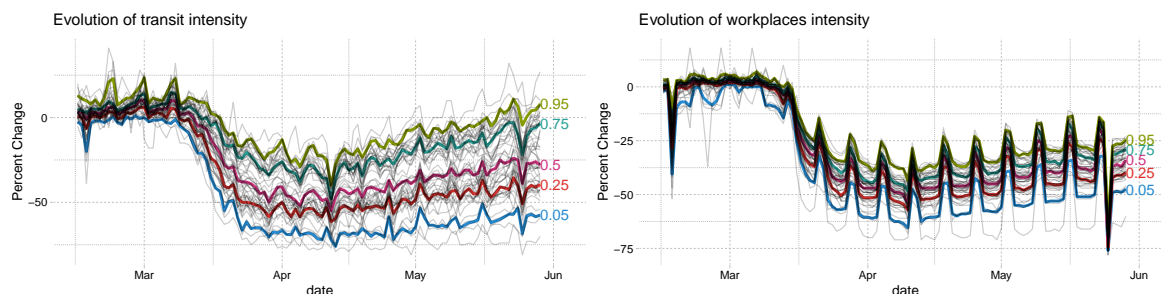
We use the database on US state policies created by Raifman et al. (2020). In our analysis, we focus on 6 policies: stay at home, closed nonessential businesses, closed K-12 schools, closed restaurants except takeout, closed movie theaters, and mandate face mask by employees in public facing businesses. We believe that the first four of these policies are the most widespread and important. Closed movie theaters is included because it captures common bans on gatherings of more than a handful of people. We also include mandatory face mask use by employees because its effectiveness on slowing down Covid-19 spread is a controversial policy issue (Howard et al., 2020; Greenhalgh et al., 2020; Zhang et al., 2020b). Table 1 provides summary statistics, where  $N$  is the number of states that have ever implemented the policy. We also obtain information on state-level covariates from Raifman et al. (2020), which include population size, total area, unemployment rate, poverty rate, and a percentage of people who are subject to illness. These confounders are motivated by Wheaton and Thompson (2020) who finds that case growth is associated with residential density and per capita income.

We obtain social distancing behavior measures from “Google COVID-19 Community Mobility Reports” (LLC, 2020). The dataset provides six measures of “mobility trends” that report a percentage change in visits and length of stay at different places relative to a

	N	Min	Median	Max
Date closed K 12 schools	51	2020-03-13	2020-03-17	2020-04-03
Stay at home shelter in place	42	2020-03-19	2020-03-28	2020-04-07
Closed movie theaters	49	2020-03-16	2020-03-21	2020-04-06
Closed restaurants except take out	48	2020-03-15	2020-03-17	2020-04-03
Closed non essential businesses	43	2020-03-19	2020-03-25	2020-04-06
Mandate face mask use by employees	39	2020-04-03	2020-05-01	2020-06-01

TABLE 1. State Policies

FIGURE 6. The Evolution of Google Mobility Measures: Transit stations and Workplaces



This figure shows the evolution of “Transit stations” and “Workplaces” of Google Mobility Reports. Thin gray lines are the value in each state and date. Thicker colored lines are quantiles of the variables conditional on date.

baseline computed by their median values of the same day of the week from January 3 to February 6, 2020. Our analysis focuses on the following four measures: “Grocery & pharmacy,” “Transit stations,” “Retail & recreation,” and “Workplaces.”<sup>17</sup>

Figure 6 shows the evolution of “Transit stations” and “Workplaces,” where thin lines are the value in each state and date while thicker colored lines are quantiles conditional on date. The figures illustrate a sharp decline in people’s movements starting from mid-March as well as differences in their evolutions across states. They also reveal periodic fluctuations associated with days of the week, which motivates our use of weekly measures.

In our empirical analysis, we use weekly measures for cases, deaths, and tests by summing up their daily measures from day  $t$  to  $t - 6$ . We focus on weekly cases and deaths because daily new cases and deaths are affected by the timing of reporting and testing, and are quite volatile as shown in Figure 17 in the appendix. Aggregating to weekly new cases/deaths/tests smooths out idiosyncratic daily noises as well as periodic fluctuations associated with days of the week. We also construct weekly policy and behavior variables by taking 7 day moving averages from day  $t - 14$  to  $t - 21$  for case growth, where the delay reflects the time lag between infection and case confirmation. The four weekly behavior

<sup>17</sup>The other two measures are “Residential” and “Parks.” We drop “Residential” because it is highly correlated with both “Workplaces” and “Retail & recreation” at correlation coefficients of -0.98. We also drop “Parks” because it does not have clear implication on the spread of Covid-19.

TABLE 2. Correlations among Policies and Behavior

	workplaces	retail	grocery	transit	masks for employees	closed K-12 schools	stay at home	closed movie theaters	closed restaurants	closed businesses
workplaces	1.00									
retail	0.94	1.00								
grocery	0.75	0.82	1.00							
transit	0.90	0.92	0.83	1.00						
masks for employees	-0.32	-0.19	-0.16	-0.30	1.00					
closed K-12 schools	-0.92	-0.81	-0.58	-0.75	0.46	1.00				
stay at home	-0.70	-0.69	-0.71	-0.72	0.31	0.65	1.00			
closed movie theaters	-0.82	-0.77	-0.65	-0.72	0.40	0.85	0.75	1.00		
closed restaurants	-0.79	-0.83	-0.69	-0.77	0.26	0.77	0.74	0.84	1.00	
closed businesses	-0.66	-0.68	-0.68	-0.66	0.12	0.59	0.77	0.69	0.73	1.00

Each off-diagonal entry reports a correlation coefficient of a pair of policy and behavior variables.

variables are referred as “Transit Intensity,” “Workplace Intensity,” “Retail Intensity,” and “Grocery Intensity.” Consequently, our empirical analysis uses 7 day moving averages of all variables recorded at daily frequencies. Our sample period is from March 7, 2020 to June 3, 2020.

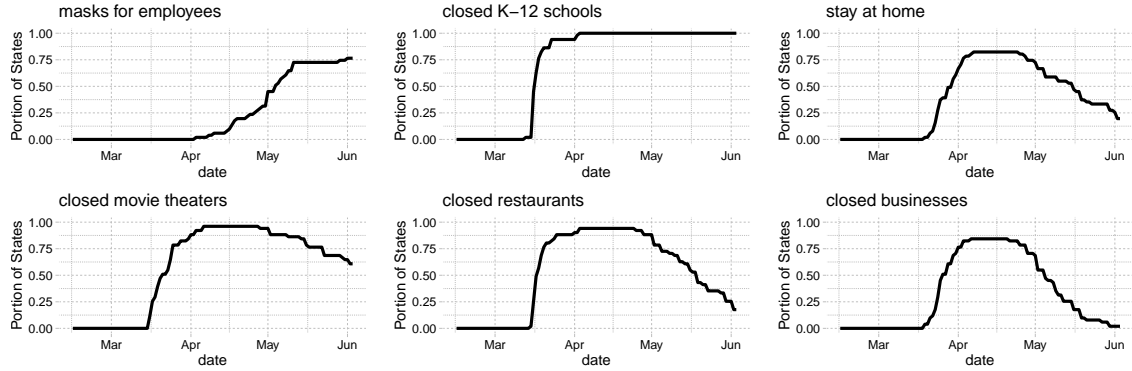
Table 2 reports that weekly policy and behavior variables are highly correlated with each other, except for the “masks for employees” policy. High correlations may cause multicollinearity problems and could limit our ability to separately identify the effect of each policy or behavior variable on case growth, but this does not prevent us from identifying the aggregate effect of all policies and behavior variables on case or death growth.

Figure 7 shows the portion of states that have each policy in place on each date. For most policies, there is considerable variation across states in the time in which the policies are active. The one exception is K-12 school closures. About 80% of states closed schools within a day or two of March 15th, and all states closed schools by early April. This makes the effect of school closings difficult to separate from aggregate time series variation.

**4.2. The Effect of Policies and Information on Behavior.** We first examine how policies and information affect social distancing behaviors by estimating a version of (PI→B):

$$B_{it}^j = (\beta^j)'P_{it} + (\gamma^j)'I_{it} + (\delta_B^j)'W_{it} + \varepsilon_{it}^{bj},$$

FIGURE 7. Portion of states with each policy



where  $B_{it}^j$  represents behavior variable  $j$  in state  $i$  at  $t$ .  $P_{it}$  collects the Covid related policies in state  $i$  at  $t$ . Confounders,  $W_{it}$ , include state-level covariates, month indicators, and their interactions.  $I_{it}$  is a set of information variables that affect people’s behaviors at  $t$ . As information, we include each state’s growth of cases (in panel 3a) or deaths (in panel 3b), and log cases or deaths. Additionally, in columns (5)-(8) of each panel, we include national growth and log of cases or deaths.

Table 3 reports the estimates with standard errors clustered at the state level. Across different specifications, our results imply that policies have large effects on behavior. Comparing columns (1)-(4) with columns (5)-(8), the magnitude of policy effects are sensitive to whether national cases or deaths are included as information. The coefficient on school closures is particularly sensitive to the inclusion of national information variables. As shown in figure 7, there is little variation across states in the timing of school closures. Consequently, it is difficult to separate the effect of school closures from a behavioral response to the national trend in cases and deaths.

The other policy coefficients are less sensitive to the inclusion of national case/death variables. After school closures, stay at home orders and restaurant closures have the next largest effect. Somewhat surprisingly, closure of nonessential businesses appears to have a modest effect on behavior. Closing movie theaters has a similar, small effect on behavior. The effect of masks for employees is also small. The comparison of effects across policies should be interpreted with caution. Differences between policy effects are often statistically insignificant; except for masks for employees, the policies are highly correlated and it is difficult to separate their effects.

The row “ $\sum_j \text{Policy}_j$ ” reports the sum of the estimated effect of all policies, which is substantial and can account for a large fraction of the observed declines in behavior variables. For example, in figure 6, transit intensity for a median state was approximately -50% at its lowest point in early April. The estimated policy coefficients in columns imply that imposing all six policies would lead to roughly 85% (in columns 1-4) or roughly 50% (in columns 5-8) of the observed decline. The large impact of policies on transit intensity

TABLE 3. The Effect of Policies and Information on Behavior ( $PI \rightarrow B$ )  
(A) Cases as Information

	<i>Dependent variable:</i>							
	workplaces	retail	grocery	transit	workplaces	retail	grocery	transit
	(1)	(2)	(3)	(4)	(5)	(6)	(7)	(8)
masks for employees	-0.011 (0.873)	-1.207 (1.513)	-2.178** (0.952)	-3.104 (2.213)	-0.812 (0.660)	-2.422* (1.347)	-2.422*** (0.902)	-4.044* (2.094)
closed K-12 schools	-19.678*** (2.830)	-21.898*** (4.409)	-13.021*** (2.536)	-22.694*** (5.597)	-4.908*** (1.526)	-1.873 (1.979)	-7.923*** (2.944)	-5.147 (4.868)
stay at home	-2.943*** (1.045)	-5.625*** (1.346)	-5.598*** (1.361)	-8.577*** (2.366)	-3.222*** (0.957)	-6.306*** (1.154)	-5.620*** (1.356)	-8.881*** (2.347)
closed movie theaters	-1.975* (1.103)	-3.444** (1.607)	-2.897** (1.200)	1.129 (2.359)	-1.464* (0.820)	-3.061** (1.310)	-2.643** (1.150)	1.764 (2.252)
closed restaurants	-3.151*** (1.012)	-7.682*** (1.500)	-1.431* (0.756)	-7.969*** (2.557)	-1.435** (0.698)	-5.095*** (1.002)	-0.903 (0.623)	-5.954** (2.365)
closed businesses	-1.942* (1.116)	-1.742 (1.362)	-2.390** (1.044)	-1.300 (2.039)	-2.131** (0.908)	-2.147* (1.125)	-2.418** (0.981)	-1.510 (1.917)
$\Delta \log \Delta C_{it}$	1.791*** (0.356)	1.046** (0.532)	1.870*** (0.376)	1.857*** (0.553)	1.596*** (0.221)	1.155*** (0.378)	1.710*** (0.403)	1.591*** (0.601)
$\log \Delta C_{it}$	-2.107*** (0.493)	-1.934** (0.900)	0.225 (0.481)	-1.092 (1.175)	-0.366 (0.340)	0.210 (0.784)	0.880 (0.542)	0.997 (1.285)
$\Delta \log \Delta C_{it.national}$					-2.998*** (0.452)	-6.952*** (0.759)	-0.319 (0.680)	-3.294*** (1.187)
$\log \Delta C_{it.national}$					-6.610*** (0.440)	-8.957*** (0.853)	-2.283*** (0.826)	-7.854*** (1.396)
state variables	Yes	Yes	Yes	Yes	Yes	Yes	Yes	Yes
Month $\times$ state variables	Yes	Yes	Yes	Yes	Yes	Yes	Yes	Yes
$\sum_j \text{Policy}_j$	-29.699*** (3.296)	-41.597*** (5.343)	-27.515*** (3.246)	-42.515*** (6.813)	-13.972*** (1.953)	-20.904*** (2.859)	-21.931*** (3.325)	-23.772*** (5.127)
Observations	4,284	4,284	4,284	4,284	4,284	4,284	4,284	4,284
R <sup>2</sup>	0.912	0.854	0.788	0.812	0.945	0.902	0.794	0.836
Adjusted R <sup>2</sup>	0.912	0.853	0.786	0.810	0.945	0.901	0.793	0.835

Note:

\* p<0.1; \*\* p<0.05; \*\*\* p<0.01

Dependent variables are “Transit Intensity,” “Workplace Intensity,” “Retail Intensity,” and “Grocery Intensity” defined as 7 days moving averages of corresponding daily measures obtained from Google Mobility Reports. All specifications include state-level characteristics (population, area, unemployment rate, poverty rate, and a percentage of people subject to illness) as well as their interactions with the log of days since Jan 15, 2020. The row “ $\sum_j \text{Policy}_j$ ” reports the sum of six policy coefficients. Standard errors are clustered at the state level.

(B) Deaths as Information

	<i>Dependent variable:</i>							
	workplaces	retail	grocery	transit	workplaces	retail	grocery	transit
	(1)	(2)	(3)	(4)	(5)	(6)	(7)	(8)
masks for employees	-0.477 (0.753)	-2.217 (1.415)	-2.720** (1.059)	-3.914* (2.320)	-1.335** (0.642)	-3.487** (1.389)	-3.156*** (0.989)	-4.857** (2.270)
closed K-12 schools	-24.156*** (2.253)	-26.171*** (3.220)	-12.250*** (1.771)	-24.946*** (3.818)	-5.355*** (1.703)	-1.900 (1.934)	-3.859 (2.378)	-5.245 (4.737)
stay at home	-2.579*** (0.985)	-5.589*** (1.347)	-6.090*** (1.523)	-8.761*** (2.513)	-2.799*** (0.959)	-5.998*** (1.188)	-6.229*** (1.518)	-9.024*** (2.557)
closed movie theaters	-2.298** (1.140)	-4.148** (1.693)	-3.102** (1.229)	0.658 (2.364)	-1.032 (0.820)	-2.661* (1.379)	-2.585** (1.144)	1.945 (2.321)
closed restaurants	-3.479*** (1.104)	-7.579*** (1.559)	-1.317* (0.752)	-7.934*** (2.583)	-1.507** (0.707)	-4.919*** (1.016)	-0.400 (0.660)	-5.838** (2.437)
closed businesses	-2.106** (1.055)	-2.351* (1.343)	-2.516** (1.126)	-1.656 (2.077)	-1.072 (0.896)	-0.977 (1.160)	-2.042* (1.050)	-0.563 (2.023)
$\Delta \log \Delta D_{it}$	-0.922** (0.407)	-2.050*** (0.595)	-0.469 (0.418)	-1.263** (0.619)	0.115 (0.237)	-0.278 (0.438)	0.136 (0.422)	-0.061 (0.578)
$\log \Delta D_{it}$	-1.077*** (0.389)	-0.185 (0.741)	0.057 (0.565)	-0.262 (1.195)	-0.644 (0.409)	0.155 (0.790)	0.179 (0.609)	0.134 (1.284)
$\Delta \log \Delta D_{it.national}$					-4.066*** (0.353)	-6.883*** (0.619)	-2.351*** (0.449)	-4.695*** (0.833)
$\log \Delta D_{it.national}$					-6.322*** (0.420)	-7.884*** (0.594)	-2.731*** (0.561)	-6.551*** (0.997)
state variables	Yes	Yes	Yes	Yes	Yes	Yes	Yes	Yes
Month $\times$ state variables	Yes	Yes	Yes	Yes	Yes	Yes	Yes	Yes
$\sum_j \text{Policy}_j$	-35.094*** (2.253)	-48.055*** (3.604)	-27.995*** (2.982)	-46.554*** (5.781)	-13.100*** (2.119)	-19.941*** (3.144)	-18.270*** (3.258)	-23.581*** (6.007)
Observations	4,284	4,284	4,284	4,284	4,284	4,284	4,284	4,284
R <sup>2</sup>	0.902	0.850	0.778	0.810	0.943	0.905	0.792	0.834
Adjusted R <sup>2</sup>	0.902	0.849	0.776	0.809	0.943	0.904	0.791	0.833

Note:

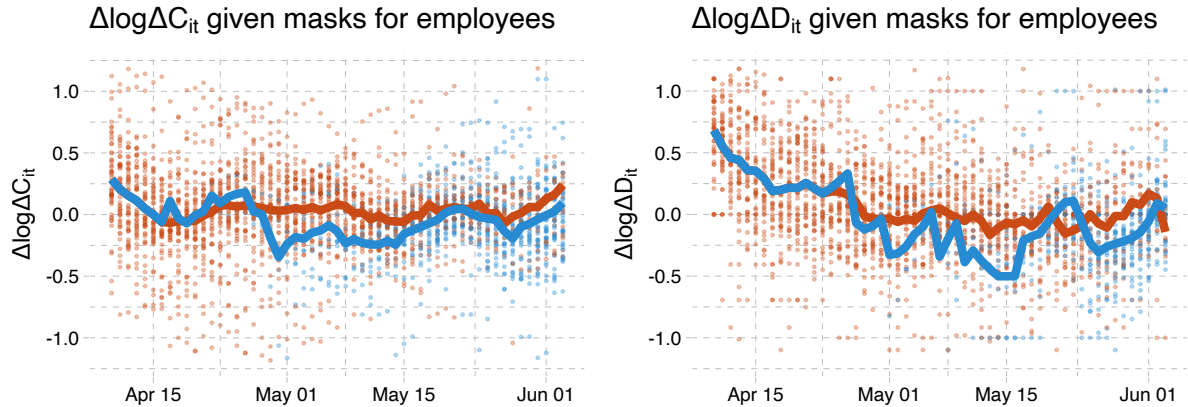
\*p<0.1; \*\*p<0.05; \*\*\*p<0.01

Dependent variables are “Transit Intensity,” “Workplace Intensity,” “Retail Intensity,” and “Grocery Intensity” defined as 7 days moving averages of corresponding daily measures obtained from Google Mobility Reports. All specifications include state-level characteristics (population, area, unemployment rate, poverty rate, and a percentage of people subject to illness) as well as their interactions with the log of days since Jan 15, 2020. The row “ $\sum_j \text{Policy}_j$ ” reports the sum of six policy coefficients. Standard errors are clustered at the state level.

suggests that the policies may have reduced the COVID-19 infection by reducing people’s use of public transportation.<sup>18</sup>

In panel 3b, estimated coefficients of deaths and death growth are generally negative. This suggests that the higher number of deaths reduces social interactions measured by Google Mobility Reports perhaps because people are increasingly aware of prevalence of Covid-19 (Maloney and Taskin, 2020). The coefficients on log cases and case growth in panel 3a are more mixed. In columns (5)-(8) of both panels, we see that national case/death variables have large, negative coefficients. This suggests that behavior responded to national conditions although it is also likely that national case/death variables capture unobserved aggregate time effects beyond information (e.g., latent policy variables and time-varying confounders that are common across states) which are not fully controlled by month dummies.

FIGURE 8. Case and death growth conditional on mask mandates



In these figures, red points are the case or death growth rate in states without a mask mandate. Blue points are states with a mask mandate 14 (21 for deaths) days prior. The red line is the average across states without a mask mandate 14 (21 for deaths) days earlier. The blue line is the average across states with a mask mandate 14 (21 for deaths) earlier.

**4.3. The Direct Effect of Policies and Behavior on Case and Death Growth.** We now analyze how behavior and policies together influence case and death growth rates. We begin with some simple graphical evidence of the effect of policies on case and death growth. Figure 8 shows average case and death growth conditional on date and whether masks are mandatory for employees.<sup>19</sup> The left panel of the figure shows that states with a mask mandate consistently have 0-0.2 lower case growth than states without. The right panel

<sup>18</sup>Analyzing the New York City’s subway ridership, Harris (2020) finds a strong link between public transit and spread of infection.

<sup>19</sup>We take 14 and 21 day lags of mask policies for case and death growths, respectively, to identify the states with a mask mandate because policies affect cases and deaths with time lags. See our discussion in the Appendix A.6.

TABLE 4. The Direct Effect of Behavior and Policies on Case and Death Growth ( $BPI \rightarrow Y$ )

	<i>Dependent variable:</i>					<i>Dependent variable:</i>			
	$\Delta \log \Delta C_{it}$					$\Delta \log \Delta D_{it}$			
	(1)	(2)	(3)	(4)	(1)	(2)	(3)	(4)	
lag(masks for employees, 14)	-0.084** (0.035)		-0.097*** (0.032)		lag(masks for employees, 21)	-0.145*** (0.052)		-0.148*** (0.051)	
lag(masks*April, 14)		-0.098* (0.051)		-0.111** (0.051)	lag(masks*April, 21)		-0.159* (0.082)		-0.166** (0.082)
lag(masks*May, 14)		-0.080** (0.038)		-0.094*** (0.034)	lag(masks*May, 21)		-0.138** (0.061)		-0.138** (0.059)
lag(closed K-12 schools, 14)	-0.095 (0.089)	-0.096 (0.089)	0.025 (0.103)	0.024 (0.103)	lag(closed K-12 schools, 21)	-0.271*** (0.096)	-0.272*** (0.096)	-0.199** (0.094)	-0.201** (0.094)
lag(stay at home, 14)	-0.041 (0.047)	-0.042 (0.048)	-0.064 (0.048)	-0.065 (0.049)	lag(stay at home, 21)	-0.040 (0.065)	-0.041 (0.065)	-0.047 (0.063)	-0.048 (0.064)
lag(closed movie theaters, 14)	0.049 (0.049)	0.047 (0.049)	0.053 (0.048)	0.052 (0.049)	lag(closed movie theaters, 21)	0.039 (0.091)	0.038 (0.091)	0.054 (0.090)	0.052 (0.090)
lag(closed restaurants, 14)	0.020 (0.048)	0.020 (0.048)	0.021 (0.046)	0.021 (0.045)	lag(closed restaurants, 21)	0.085 (0.067)	0.085 (0.067)	0.081 (0.067)	0.081 (0.067)
lag(closed businesses, 14)	-0.004 (0.042)	-0.003 (0.042)	-0.016 (0.042)	-0.015 (0.042)	lag(closed businesses, 21)	-0.003 (0.056)	-0.003 (0.056)	-0.003 (0.058)	-0.002 (0.058)
lag(workplaces, 14)	0.010* (0.006)	0.010* (0.006)	0.003 (0.006)	0.003 (0.006)	lag(workplaces, 21)	0.014*** (0.005)	0.014*** (0.005)	0.009 (0.005)	0.009 (0.006)
lag(retail, 14)	0.005* (0.003)	0.005* (0.003)	0.003 (0.003)	0.003 (0.003)	lag(retail, 21)	0.006 (0.004)	0.006 (0.004)	0.006 (0.004)	0.006 (0.004)
lag(grocery, 14)	-0.004 (0.003)	-0.004 (0.003)	-0.002 (0.003)	-0.002 (0.003)	lag(grocery, 21)	-0.010*** (0.004)	-0.010*** (0.004)	-0.010*** (0.004)	-0.010*** (0.004)
lag(transit, 14)	0.003 (0.003)	0.003 (0.003)	0.003 (0.003)	0.003 (0.003)	lag(transit, 21)	0.003 (0.003)	0.003 (0.003)	0.003 (0.003)	0.003 (0.003)
lag( $\Delta \log \Delta C_{it}$ , 14)	0.017 (0.025)	0.017 (0.025)	0.023 (0.028)	0.023 (0.028)	lag( $\Delta \log \Delta D_{it}$ , 21)	0.016 (0.034)	0.016 (0.034)	0.017 (0.037)	0.017 (0.037)
lag(log $\Delta C_{it}$ , 14)	-0.110*** (0.019)	-0.110*** (0.019)	-0.089*** (0.021)	-0.089*** (0.021)	lag(log $\Delta D_{it}$ , 21)	-0.051** (0.025)	-0.051** (0.025)	-0.049** (0.024)	-0.049** (0.024)
lag( $\Delta \log \Delta C_{it}$ .national, 14)			-0.090** (0.044)	-0.089** (0.044)	lag( $\Delta \log \Delta D_{it}$ .national, 21)			-0.046 (0.045)	-0.047 (0.045)
lag(log $\Delta C_{it}$ .national, 14)			-0.184*** (0.048)	-0.184*** (0.048)	lag(log $\Delta D_{it}$ .national, 21)			-0.060 (0.039)	-0.060 (0.039)
$\Delta \log T_{it}$	0.153*** (0.044)	0.153*** (0.044)	0.158*** (0.042)	0.158*** (0.042)					
state variables	Yes	Yes	Yes	Yes	state variables	Yes	Yes	Yes	Yes
Month $\times$ state variables	Yes	Yes	Yes	Yes	Month $\times$ state variables	Yes	Yes	Yes	Yes
$\sum_j$ Policy $_j$	-0.155 (0.136)	-0.252 (0.156)	-0.078 (0.160)	-0.189 (0.178)	$\sum_j$ Policy $_j$	-0.334** (0.164)	-0.489** (0.198)	-0.262 (0.176)	-0.422** (0.208)
$\sum_k w_k$ Behavior $_k$	-0.756*** (0.143)	-0.753*** (0.144)	-0.372** (0.153)	-0.368** (0.152)	$\sum_k w_k$ Behavior $_k$	-0.871*** (0.164)	-0.870*** (0.163)	-0.646*** (0.181)	-0.642*** (0.179)
Observations	3,823	3,823	3,823	3,823	Observations	3,468	3,468	3,468	3,468
R <sup>2</sup>	0.759	0.759	0.765	0.765	R <sup>2</sup>	0.521	0.521	0.522	0.522
Adjusted R <sup>2</sup>	0.757	0.757	0.762	0.762	Adjusted R <sup>2</sup>	0.516	0.516	0.517	0.517

Note:

\*p<0.1; \*\*p<0.05; \*\*\*p<0.01

Note:

\*p<0.1; \*\*p<0.05; \*\*\*p<0.01

Dependent variable is the weekly growth rate of confirmed cases (in the left panel) or deaths (in the right panel) as defined in equation (3). The covariates include lagged policy and behavior variables, which are constructed as 7 day moving averages between  $t$  to  $t - 7$  of corresponding daily measures. The row " $\sum_j$  Policies $_j$ " reports the sum of six policy coefficients. The row " $\sum_k w_k$  Behavior $_k$ " reports the sum of four coefficients of behavior variables weighted by the average of each behavioral variable from April 1st-10th. Standard errors are clustered at the state level.

CAUSAL IMPACT OF MASKS, POLICIES, BEHAVIOR



also illustrates that states with a mask mandate tend to have lower average death growth than states without a mask mandate.

Similar plots are shown for other policies in Figures 23 and 24 in the appendix. The figures for stay at home orders and closure of nonessential businesses are qualitatively similar to that for masks. States with these two policies appear to have about 0.1 lower case growth than states without. The effects of school closures, movie theater closures, and restaurant closures are not clearly visible in these figures. These figures are merely suggestive; the patterns observed in them may be driven by confounders.

We more formally analyze the effect of policies by estimating regressions. We first look at the direct effect of policies on case and death growth conditional on behavior by estimating equation (BPI $\rightarrow$ Y):

$$Y_{i,t+\ell} = \alpha' B_{it} + \pi' P_{it} + \mu' I_{it} + \delta_Y' W_{it} + \varepsilon_{it}^y, \quad (14)$$

where the outcome variable,  $Y_{i,t+\ell}$ , is either case growth or death growth.

For case growth as the outcome, we choose a lag length of  $\ell = 14$  days for behavior, policy, and information variables to reflect the delay between infection and confirmation of case.<sup>20</sup>  $B_{it} = (B_{it}^1, \dots, B_{it}^4)'$  is a vector of four behavior variables in state  $i$ .  $P_{it}$  includes the Covid related policies in state  $i$  that directly affect the spread of Covid-19 after controlling for behavior variables (e.g., masks for employees). We include information variables,  $I_{it}$ , that include the past cases and case growths because the past cases may be correlated with (latent) government policies or people's behaviors that are not fully captured by our observed policy and behavior variables. We also consider a specification that includes the past cases and case growth at the national level as additional information variables.  $W_{it}$  is a set of confounders that include month dummies, state-level covariates, and the interaction terms between month dummies and state-level covariates.<sup>21</sup> For case growth,  $W_{it}$  also includes the test rate growth  $\Delta \log(T)_{it}$  to capture the effect of changing test rates on confirmed cases. Equation (14) corresponds to (M-C) derived from the SIR model.

For death growth as the outcome, we take a lag length of  $\ell = 21$  days. The information variables  $I_{it}$  include the past deaths and death growths;  $W_{it}$  is the same as that of the case growth equation except that the growth rate of test rates is excluded from  $W_{it}$  as implied by equation (M-D).

Table 4 shows the results of estimating (14) for case and death growths. Column (1) represents our baseline specification while column (2) allows the effect of masks to be different before and after May 1st. Columns (3) and (4) include past cases/deaths and growth at national level as additional regressors.

<sup>20</sup>As we review in the Appendix A.6, a lag length of 14 days between exposure and case reporting, as well as a lag length of 21 days between exposure and deaths, is broadly consistent with currently available evidence.

<sup>21</sup>Month dummies also represent the latent information that is not fully captured by the past cases and growths.

The estimates indicate that mandatory face masks for employees reduce the growth rate of infections and deaths by 8-15 percent, while holding behavior constant. This suggests that requiring masks for employees in public-facing businesses may be an effective preventive measure.<sup>22</sup> The estimated effect of masks on death growth is larger than the effect on case growth, but this difference between the two estimated effects is not statistically significant.

Except for mask requirements, policies appear to have little direct effect on case or death growth when behavior is held constant. The one exception is that closing schools has a large and statistically significant coefficient in the death growth regressions. As discussed above, there is little cross-state variation in the timing of school closures, making estimates of its effect less reliable.

The row “ $\sum_k w_k \text{Behavior}_k$ ” reports the sum of estimated coefficients weighted by the average of the behavioral variables from April 1st-10th. The estimates of  $-0.76$  and  $-0.87$  for “ $\sum_k w_k \text{Behavior}_k$ ” in column (1) imply that a reduction in mobility measures relative to the baseline in January and February have induced a decrease in case and death growth rates by 76 and 83 percent, respectively, suggesting an importance of social distancing for reducing the spread of Covid-19. When including national cases and deaths in information, as shown in columns (3) and (4), the estimated aggregate impact of behavior is substantially smaller, but remains large and statistically significant.

A useful practical implication of these results are that Google Mobility Reports and similar data might be useful as a leading indicator of potential case or death growth. This should be done cautiously, however, because other changes in the environment might alter the relationship between behavior and infections. Preventative measures, including mandatory face masks, and changes in habit that are not captured in our data might alter the future relationship between Google Mobility Reports and case/death growth.

The negative coefficients of past cases or deaths in table 4 is consistent with a hypothesis that higher reported cases and deaths change people’s behavior to reduce transmission risks. Such behavioral changes in response to new information are partly captured by Google mobility measures, but the negative estimated coefficient of past cases or deaths imply that other latent behavioral changes that are not fully captured by Google mobility measures (e.g., frequent hand-washing, wearing masks, and keeping 6ft/2m distancing) are also important for reducing future cases and deaths.

If policies are enacted and behavior changes, then future cases/deaths and information will change, which will induce further behavior changes. However, since the model includes

---

<sup>22</sup>Note that we are *not* evaluating the effect of *universal* mask-wearing for the public but that of mask-wearing for employees. The effect of *universal* mask-wearing for the public could be larger if people comply with such a policy measure. Tian et al. (2020) considered a model in which mask wearing reduces the reproduction number by a factor  $(1 - e \cdot pm)^2$ , where  $e$  is the efficacy of trapping viral particles inside the mask and  $pm$  is the percentage of mask-wearing population. Given an estimate of  $R_0 = 2.4$ , Howard et al. (2020) argue that 50% mask usage and a 50% mask efficacy level would reduce the reproduction number from 2.4 to 1.35, an order of magnitude impact.

TABLE 5. The Total Effect of Policies on Case and Death Growth ( $PI \rightarrow Y$ )

	<i>Dependent variable:</i>					<i>Dependent variable:</i>			
	$\Delta \log \Delta C_{it}$					$\Delta \log \Delta D_{it}$			
	(1)	(2)	(3)	(4)	(1)	(2)	(3)	(4)	
lag(masks for employees, 14)	-0.081** (0.041)		-0.105*** (0.037)		lag(masks for employees, 21)	-0.133** (0.053)		-0.161*** (0.052)	
lag(masks*April, 14)		-0.157** (0.067)		-0.146** (0.061)	lag(masks*April, 21)		-0.174* (0.089)		-0.193** (0.091)
lag(masks*May, 14)		-0.062 (0.039)		-0.094*** (0.036)	lag(masks*May, 21)		-0.112* (0.057)		-0.145** (0.057)
lag(closed K-12 schools, 14)	-0.240** (0.097)	-0.241** (0.097)	0.009 (0.109)	0.007 (0.108)	lag(closed K-12 schools, 21)	-0.641*** (0.117)	-0.641*** (0.117)	-0.250** (0.103)	-0.252** (0.104)
lag(stay at home, 14)	-0.126** (0.055)	-0.128** (0.055)	-0.117** (0.052)	-0.118** (0.052)	lag(stay at home, 21)	-0.080 (0.065)	-0.082 (0.065)	-0.075 (0.062)	-0.076 (0.062)
lag(closed movie theaters, 14)	0.030 (0.052)	0.023 (0.052)	0.058 (0.047)	0.054 (0.047)	lag(closed movie theaters, 21)	0.018 (0.089)	0.015 (0.089)	0.065 (0.084)	0.063 (0.084)
lag(closed restaurants, 14)	-0.042 (0.049)	-0.039 (0.048)	-0.010 (0.045)	-0.009 (0.044)	lag(closed restaurants, 21)	-0.015 (0.059)	-0.013 (0.059)	0.031 (0.055)	0.033 (0.055)
lag(closed businesses, 14)	-0.048 (0.050)	-0.041 (0.050)	-0.035 (0.044)	-0.031 (0.044)	lag(closed businesses, 21)	-0.038 (0.066)	-0.035 (0.064)	-0.012 (0.063)	-0.010 (0.062)
lag( $\Delta \log \Delta C_{it}$ , 14)	0.040* (0.024)	0.039* (0.024)	0.033 (0.028)	0.032 (0.028)	lag( $\Delta \log \Delta D_{it}$ , 21)	-0.0002 (0.033)	0.0002 (0.033)	0.019 (0.036)	0.019 (0.036)
lag(log $\Delta C_{it}$ , 14)	-0.138*** (0.024)	-0.138*** (0.023)	-0.091*** (0.026)	-0.091*** (0.026)	lag(log $\Delta D_{it}$ , 21)	-0.078*** (0.027)	-0.078*** (0.027)	-0.062** (0.027)	-0.063** (0.027)
lag( $\Delta \log \Delta C_{it}$ .national, 14)			-0.123*** (0.043)	-0.121*** (0.042)	lag( $\Delta \log \Delta D_{it}$ .national, 21)			-0.160*** (0.057)	-0.160*** (0.057)
lag(log $\Delta C_{it}$ .national, 14)			-0.241*** (0.044)	-0.239*** (0.044)	lag(log $\Delta D_{it}$ .national, 21)			-0.120*** (0.030)	-0.119*** (0.030)
$\Delta \log T_{it}$	0.157*** (0.044)	0.158*** (0.044)	0.161*** (0.042)	0.161*** (0.042)					
state variables	Yes	Yes	Yes	Yes	state variables	Yes	Yes	Yes	Yes
Month $\times$ state variables	Yes	Yes	Yes	Yes	Month $\times$ state variables	Yes	Yes	Yes	Yes
$\sum_j \text{Policy}_j$	-0.508*** (0.162)	-0.644*** (0.198)	-0.199 (0.164)	-0.336* (0.187)	$\sum_j \text{Policy}_j$	-0.889*** (0.171)	-1.042*** (0.213)	-0.402** (0.184)	-0.580*** (0.222)
Observations	3,823	3,823	3,823	3,823	Observations	3,468	3,468	3,468	3,468
R <sup>2</sup>	0.748	0.749	0.761	0.762	R <sup>2</sup>	0.504	0.504	0.515	0.515
Adjusted R <sup>2</sup>	0.746	0.747	0.759	0.759	Adjusted R <sup>2</sup>	0.499	0.499	0.510	0.510

Note: \*p<0.1; \*\*p<0.05; \*\*\*p<0.01

Note: \*p<0.1; \*\*p<0.05; \*\*\*p<0.01

Dependent variable is the weekly growth rate of confirmed cases (in the left panel) or deaths (in the right panel) as defined in equation (3). The covariates include lagged policy variables, which are constructed as 7 day moving averages between  $t$  to  $t - 7$  of corresponding daily measures. The row " $\sum_j \text{Policies}_j$ " reports the sum of six policy coefficients. Standard errors are clustered at the state level.

TABLE 6. Direct and Indirect Policy Effects without national case/death variables

Cases						
	Direct	Indirect	Total	PI→Y Coef.	Average	Difference
masks for employees	-0.084** (0.034)	-0.008 (0.024)	-0.092** (0.044)	-0.081** (0.040)	-0.086** (0.041)	-0.011 (0.015)
closed K-12 schools	-0.095 (0.093)	-0.337*** (0.091)	-0.432*** (0.118)	-0.240** (0.095)	-0.336*** (0.105)	-0.192*** (0.047)
stay at home	-0.041 (0.046)	-0.065** (0.031)	-0.106** (0.053)	-0.126** (0.055)	-0.116** (0.054)	0.020 (0.013)
closed movie theaters	0.049 (0.048)	-0.024 (0.025)	0.024 (0.055)	0.030 (0.050)	0.027 (0.052)	-0.005 (0.016)
closed restaurants	0.020 (0.046)	-0.091*** (0.029)	-0.071 (0.044)	-0.042 (0.048)	-0.057 (0.045)	-0.029* (0.016)
closed businesses	-0.004 (0.041)	-0.024 (0.019)	-0.028 (0.049)	-0.048 (0.050)	-0.038 (0.049)	0.020* (0.011)
$\sum_j \text{Policy}_j$	-0.155 (0.136)	-0.550*** (0.140)	-0.704*** (0.188)	-0.508*** (0.157)	-0.606*** (0.171)	-0.196*** (0.052)
$\Delta \log \Delta C_{it}$	0.017 (0.025)	0.023** (0.010)	0.040* (0.023)	0.040* (0.024)	0.040* (0.023)	0.000 (0.006)
$\log \Delta C_{it}$	-0.110*** (0.019)	-0.036** (0.014)	-0.146*** (0.026)	-0.138*** (0.023)	-0.142*** (0.024)	-0.008 (0.007)
Deaths						
	Direct	Indirect	Total	PI→Y Coef.	Average	Difference
masks for employees	-0.145*** (0.050)	-0.004 (0.023)	-0.149*** (0.055)	-0.133*** (0.051)	-0.141*** (0.052)	-0.016 (0.015)
closed K-12 schools	-0.271*** (0.092)	-0.451*** (0.082)	-0.722*** (0.111)	-0.641*** (0.107)	-0.681*** (0.108)	-0.081*** (0.026)
stay at home	-0.040 (0.064)	-0.034 (0.035)	-0.074 (0.064)	-0.080 (0.064)	-0.077 (0.064)	0.006 (0.015)
closed movie theaters	0.039 (0.091)	-0.025 (0.030)	0.014 (0.089)	0.018 (0.089)	0.016 (0.088)	-0.004 (0.018)
closed restaurants	0.085 (0.065)	-0.105** (0.042)	-0.020 (0.056)	-0.015 (0.057)	-0.018 (0.056)	-0.005 (0.016)
closed businesses	-0.003 (0.055)	-0.024 (0.021)	-0.027 (0.061)	-0.038 (0.063)	-0.032 (0.062)	0.011 (0.013)
$\sum_j \text{Policy}_j$	-0.334** (0.160)	-0.644*** (0.154)	-0.979*** (0.171)	-0.889*** (0.165)	-0.934*** (0.167)	-0.090** (0.035)
$\Delta \log \Delta D_{it}$	0.016 (0.034)	-0.025** (0.011)	-0.009 (0.031)	-0.000 (0.032)	-0.004 (0.031)	-0.009* (0.005)
$\log \Delta D_{it}$	-0.051** (0.024)	-0.018* (0.010)	-0.069** (0.028)	-0.078*** (0.026)	-0.073*** (0.027)	0.009* (0.005)

Direct effects capture the effect of policy on case growth holding behavior, information, and confounders constant. Direct effects are given by  $\pi$  in equation (BPI→Y). Indirect effects capture how policy changes behavior and behavior shift case growth. They are given by  $\alpha$  from (BPI→Y) times  $\beta$  from (PI→B). The total effect is  $\pi + \beta\alpha$ . Column “PI→Y Coefficients” shows the coefficient estimates from PI→Y. Columns “Difference” are the differences between the estimates from (PI→Y) and the combination of (BPI→Y) and (PI→B) while column “Average” are their averages. Standard errors are computed by bootstrap and clustered on state.

TABLE 7. Direct and Indirect Policy Effects with national case/death variables

Cases						
	Direct	Indirect	Total	PI→Y Coef.	Average	Difference
masks for employees	-0.097*** (0.033)	-0.019 (0.017)	-0.116*** (0.040)	-0.105*** (0.038)	-0.111*** (0.039)	-0.011 (0.011)
closed K-12 schools	0.025 (0.103)	-0.021 (0.040)	0.004 (0.110)	0.009 (0.108)	0.007 (0.109)	-0.005 (0.015)
stay at home	-0.064 (0.047)	-0.047** (0.023)	-0.112** (0.049)	-0.117** (0.049)	-0.114** (0.049)	0.005 (0.009)
closed movie theaters	0.053 (0.048)	-0.002 (0.017)	0.051 (0.048)	0.058 (0.046)	0.055 (0.047)	-0.006 (0.011)
closed restaurants	0.021 (0.045)	-0.038* (0.020)	-0.017 (0.041)	-0.010 (0.043)	-0.013 (0.041)	-0.008 (0.011)
closed businesses	-0.016 (0.042)	-0.013 (0.012)	-0.028 (0.044)	-0.035 (0.044)	-0.032 (0.044)	0.006 (0.008)
$\sum_j \text{Policy}_j$	-0.078 (0.160)	-0.140** (0.065)	-0.218 (0.168)	-0.199 (0.166)	-0.209 (0.167)	-0.019 (0.018)
$\Delta \log \Delta C_{it}$	0.023 (0.028)	0.010 (0.007)	0.033 (0.028)	0.033 (0.028)	0.033 (0.028)	-0.000 (0.003)
$\log \Delta C_{it}$	-0.089*** (0.021)	0.001 (0.011)	-0.088*** (0.028)	-0.091*** (0.027)	-0.090*** (0.027)	0.003 (0.005)
$\Delta \log \Delta C_{it.national}$	-0.090** (0.044)	-0.040** (0.016)	-0.130*** (0.044)	-0.123*** (0.042)	-0.126*** (0.042)	-0.006 (0.013)
$\log \Delta C_{it.national}$	-0.184*** (0.047)	-0.068*** (0.022)	-0.252*** (0.044)	-0.241*** (0.044)	-0.247*** (0.044)	-0.010 (0.010)

Deaths						
	Direct	Indirect	Total	PI→Y Coef.	Average	Difference
masks for employees	-0.148*** (0.048)	-0.018 (0.023)	-0.166*** (0.053)	-0.161*** (0.050)	-0.164*** (0.051)	-0.005 (0.016)
closed K-12 schools	-0.199** (0.091)	-0.038 (0.038)	-0.238** (0.100)	-0.250** (0.099)	-0.244** (0.099)	0.012 (0.020)
stay at home	-0.047 (0.065)	-0.030 (0.032)	-0.077 (0.063)	-0.075 (0.063)	-0.076 (0.063)	-0.002 (0.014)
closed movie theaters	0.054 (0.090)	0.007 (0.021)	0.061 (0.086)	0.065 (0.083)	0.063 (0.084)	-0.004 (0.016)
closed restaurants	0.081 (0.064)	-0.058** (0.024)	0.023 (0.053)	0.031 (0.054)	0.027 (0.053)	-0.008 (0.014)
closed businesses	-0.003 (0.056)	0.003 (0.016)	-0.000 (0.059)	-0.012 (0.060)	-0.006 (0.059)	0.012 (0.012)
$\sum_j \text{Policy}_j$	-0.262 (0.167)	-0.135 (0.085)	-0.397** (0.179)	-0.402** (0.174)	-0.399** (0.176)	0.005 (0.024)
$\Delta \log \Delta D_{it}$	0.017 (0.037)	-0.002 (0.005)	0.015 (0.036)	0.019 (0.036)	0.017 (0.036)	-0.004 (0.004)
$\log \Delta D_{it}$	-0.049** (0.024)	-0.006 (0.009)	-0.055** (0.028)	-0.062** (0.027)	-0.059** (0.027)	0.007 (0.005)
$\Delta \log \Delta D_{it.national}$	-0.046 (0.046)	-0.069*** (0.021)	-0.115** (0.050)	-0.160*** (0.057)	-0.137*** (0.053)	0.045*** (0.013)
$\log \Delta D_{it.national}$	-0.060 (0.038)	-0.097*** (0.029)	-0.157*** (0.032)	-0.120*** (0.029)	-0.138*** (0.030)	-0.037*** (0.012)

Direct effects capture the effect of policy on case growth holding behavior, information, and confounders constant. Direct effects are given by  $\pi$  in equation (BPI→Y). Indirect effects capture how policy changes behavior and behavior shift case growth. They are given by  $\alpha$  from (BPI→Y) times  $\beta$  from (PI→B). The total effect is  $\pi + \beta\alpha$ . Column “PI→Y Coefficients” shows the coefficient estimates from PI→Y. Columns “Difference” are the differences between the estimates from (PI→Y) and the combination of (BPI→Y) and (PI→B) while column “Average” are their averages. Standard errors are computed by bootstrap and clustered on state.

lags of cases/deaths as well as their growth rates, computing a long-run effect is not completely straightforward. We investigate dynamic effects that incorporate feedback through information in section 5.

**4.4. The Total Effect of Policies on Case Growth.** In this section, we focus our analysis of policy effects when we hold information constant. The estimated effect of policy on behavior in table 3 and those of policies and behavior on case/death growth in table 4 can be combined to calculate the total effect of policy as well as its decomposition into the direct and the indirect effects.

The first three columns of table 6 show the direct (holding behavior constant) and indirect (through behavior changes) effects of policy under a specification that excludes national information variables. These are computed from the specification with national cases or deaths included as information (columns (1)-(4) of table 3 and column (1) of table 4). The estimates imply that all policies combined would reduce the growth rate of cases and deaths by 0.70 and 0.98, respectively, out of which about two-third to three-fourth is attributable to the indirect effect through their impact on behavior. The estimate also indicates that the effect of mandatory masks for employees is mostly direct.

We can also examine the total effect of policies and information on case or death growth, by estimating  $(PI \rightarrow Y)$ . The coefficients on policy in this regression combine both the direct and indirect effects.

Table 5 shows the full set of coefficient estimates for  $(PI \rightarrow Y)$ . The results are broadly consistent with what we found above. As in table 3, the effect of school closures is sensitive to the inclusion of national information variables. Also as above, mask mandates have a significant negative effect on growth rates.

In columns (2) and (4) of table 5, we find that the estimated effect of mask mandates in April is larger than that in May for both case and death regressions. This may reflect a wider *voluntary* adaptation of masks in May than in April — if more people wear masks even without mandatory mask policy, the policy effect of mandating masks for employees becomes weaker.

Table 7 presents the estimates for the specification with past national case/death variables. The effects of school closures and the sum of policies are estimated substantially smaller in table 7 when national case/death variables are included than in table 6. This sensitivity reflects the difficulty in identifying the aggregate time effect—which is largely captured by national cases/deaths—given little cross-sectional variation in the timing of school closures across states. On the other hand, the estimated effects of policies other than school closures are similar between table 6 and table 7; the effect of other policies are well-identified from cross-sectional variations.

Column “Difference” in tables 6 and 7 show the difference between the estimate of  $(PI \rightarrow Y)$  in column “ $PI \rightarrow Y$  Coefficient” and the implied estimate from  $(BPI \rightarrow Y) - (PI \rightarrow B)$  in column “Total.” Differences are generally small and statistically insignificant, broadly

supporting the validity of extra orthogonality condition in  $(BPI \rightarrow Y)$ . The difference for school closures as well as the sum of all policies in table 6 is significantly different from zero, which may be due to the aforementioned difficulty in identifying the effect of school closures. There is substantial external epidemiological evidence that suggests that schooling closures may have substantial effects on the spread of the virus: studies like Jones et al. (2020) and Davies et al. (2020) establish that children carry substantial amounts of viral loads and can contribute to the transmission (due to higher contact rate than other age groups).<sup>23</sup> The US data does not allow us to pin down the effect of closing schools reliably due to their approximate collinearity with trends in national cases.

Column “Average” of tables 6 and 7 reports the average of “Total” and “PI $\rightarrow$ Y Coefficient” columns. The average is an appealing and simple way to combine the two estimates of the total effect: one relying on the causal structure and another inferred from a direct estimation of equation  $(PI \rightarrow Y)$ .<sup>24</sup> We shall be using the average estimate in generating the counterfactuals in the next section. Turning to the results, the estimates of tables 6 and 7 imply that all policies combined would reduce  $\Delta \log \Delta D$  by 0.97 and 0.40, respectively. For comparison, the median of  $\Delta \log \Delta D_{it}$  reached its peak in mid-March of about 1.3 (see figure 20 in the appendix). Since then it has declined to near 0. Therefore, -0.97 and -0.40 roughly imply that policy changes can account for roughly one-third to two-third of the observed decrease in death growth. The remainder of the decline is likely due to changes in behavior from information.

## 5. EMPIRICAL EVALUATION OF COUNTERFACTUAL POLICIES

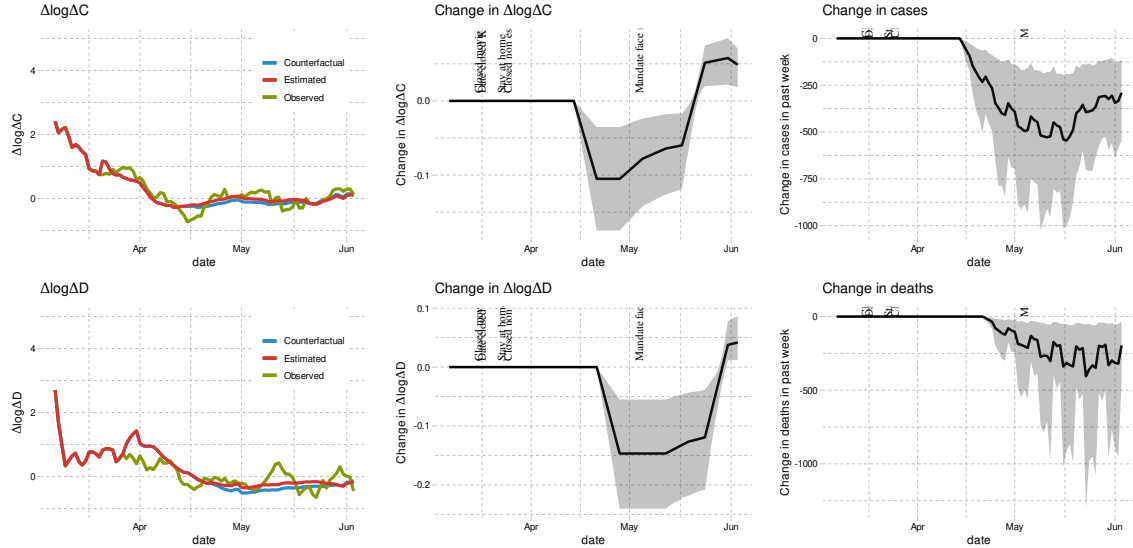
We now turn our focus to dynamic feedback effects. Policy and behavior changes that reduce case and death growth today can lead to a more optimistic, riskier behavior in the future, attenuating longer run effects. We perform the main counterfactual experiments using the average of two estimated coefficients as reported in column “Average” of table 6 under the specification that excludes the number of past national cases and deaths from information variables. In the appendix, we also report additional counterfactual experiment results with the specification that includes the national information variables, and find that they are very similar. The results on mask policies, business closures, stay at home orders are robust with respect to this variation (see Figures 10-13 in the appendix). On the other hand, the results on removing all policies, particularly closure of schools, reported in the next section, are sensitive to the inclusion of national information variables, highlighting the large uncertainty regarding the size of the effect.

---

<sup>23</sup>The evidence presented in Jones et al. (2020) has lead German to make the decision to close schools early.

<sup>24</sup>Averaging the two estimates theoretically reduces noise, albeit in our case the reductions are small. Another approach would be to use precision averaging, which would give similar result. Finally, another approach would be to use generalized method of moments to estimate all of the equations jointly. We don’t pursue this approach since it is likely to be non-robust under local deviations from correct specification; simple model averaging is more appealing in this case.

FIGURE 9. Effect of mandating masks on April 1st in Washington State



To compute the estimated and counterfactual paths we use the average of two estimated coefficients as reported in column “Average” of table 6. We set initial  $\Delta \log \Delta C$  and  $\log \Delta C$  to their values first observed in the state we are simulating. We hold all other regressors at their observed values. Error terms are drawn with replacement from the residuals. We do this many times and report the average over draws of the residuals. The shaded region is a point-wise 90% confidence interval.

**5.1. Business Mask Mandate.** We first consider the impact of a nationwide mask mandate for employees beginning on April 1st. As discussed earlier, we find that mask mandates reduce case and death growth even when holding behavior constant. In other words, mask mandates may reduce infections with relatively little economic disruption. This makes mask mandates a particularly attractive policy instrument. In this section we examine what would have happened to the number of cases if all states had imposed a mask mandate on April 1st.<sup>25</sup>

For illustrative purpose, we begin by focusing on Washington State. The left column of figure 9 shows the observed, estimated average, and counterfactual average of  $\Delta \log \Delta C$  and  $\Delta \log \Delta D$ . To compute the estimated and counterfactual paths, we use the estimate in column “Average” of table 6. We set initial  $\Delta \log \Delta C$  and  $\log \Delta C$  to their values first observed in the state we are simulating. We hold all other regressors at their observed values. Error terms are drawn with replacement from the residuals. We do this many times and report the average over draws of the residuals. The shaded region is a point-wise 90% confidence interval. The left column shows that the fit of the estimated and observed growth rate is quite good.

<sup>25</sup>We feel this is a very plausible counterfactual policy. In a paper made publicly available on April 1st, Abaluck et al. (2020) argued for mask usage based on comparisons between countries with and without pre-existing norms of widespread mask usage.



The middle column of figure 9 shows the change in growth rate from mandating masks on April 1st. The shaded region is a 90% pointwise confidence interval. As shown, mandating masks on April 1st lowers the growth of cases or deaths 14 or 21 days later by 0.1 to 0.15. This effect then gradually declines due to information feedback. Mandatory masks reduce past cases or deaths, which leads to less cautious behavior, attenuating the impact of the policy. The reversal of the decrease in growth in late April is due to our comparison of a mask mandate on April 1st with Washington’s actual mask mandate in early May. By late April, the counterfactual mask effect has decayed through information feedback, and we are comparing it the undecayed impact of Washington’s actual, later mask mandate.

The right column of figure 9 shows how the changes in case and death growth translate into changes in cases and deaths. The estimates imply that mandating masks on April 1st would have led to 500 fewer cases and 250 fewer deaths in Washington by the start of June.

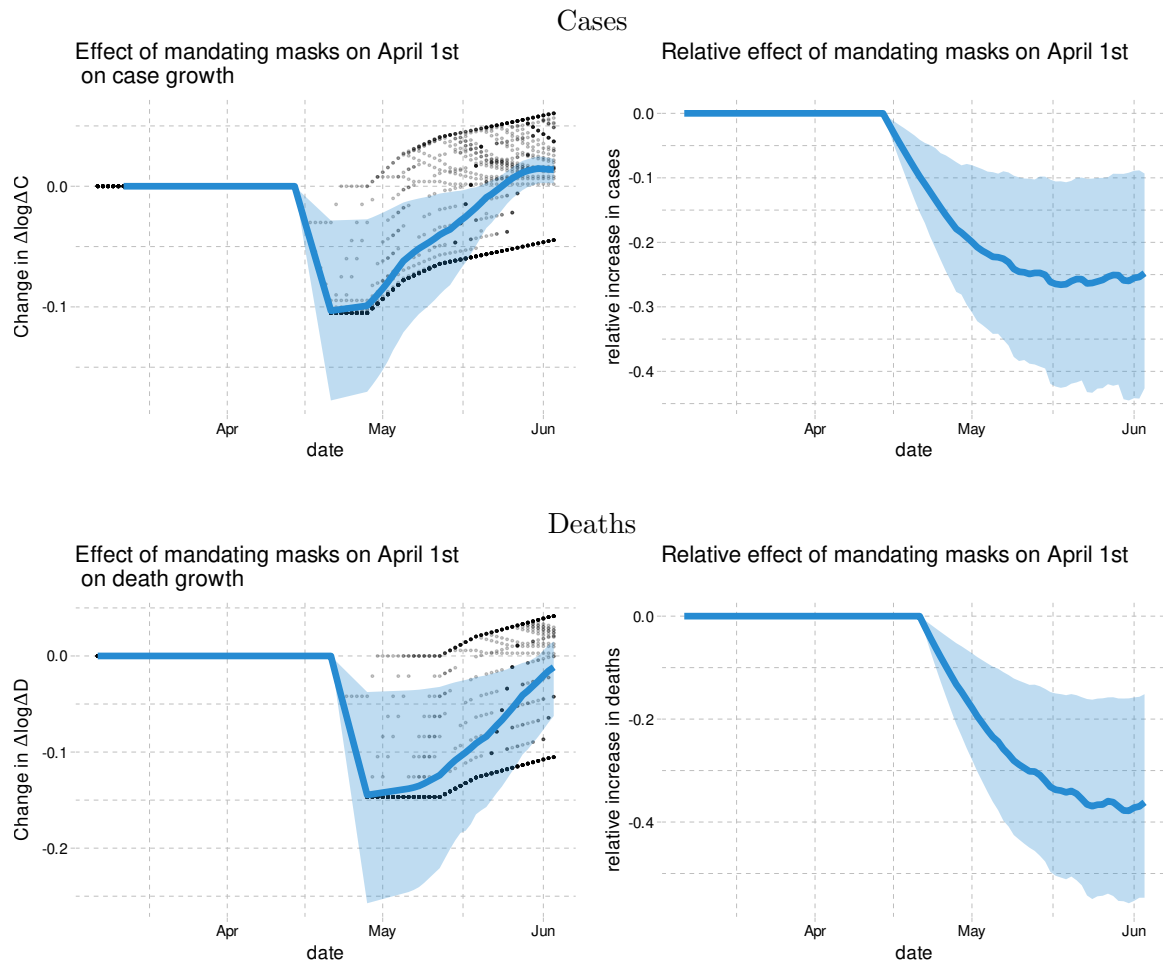
The results for other states are similar to those for Washington. In the appendix, figures 25 and 26 display similar results for Massachusetts and Illinois. Figure 10 shows the average change in cases and deaths across states. The point estimates indicate that mandating masks on April 1st could have led to 25% fewer cumulative cases and 37% fewer cumulative deaths by the end of May with their 90 percent intervals given by  $[10, 47]\%$  and  $[18, 55]\%$ , respectively. The result roughly translates into 18 to 55 thousand saved lives.

**5.2. Non-essential Business Closures.** A particularly controversial policy is the closure of non-essential businesses. We now examine a counterfactual where non-essential businesses are never closed. Figure 11 shows the effect of leaving non-essential businesses open in Washington. The point estimate implies that the closure of non-essential businesses reduced cases and deaths by a small amount. However, this estimate is relatively imprecise; 90% confidence intervals for the change in cases and deaths from leaving non-essential businesses open by the end of May are  $[-250, 700]$  and  $[-100, 1200]$ , respectively.

Figure 12 shows the national effect of leaving non essential businesses open on cases and deaths. For cases, the estimates imply that with non-essential businesses open, cases would be about -15 to 60% higher in late May. The results for deaths are similar but less precise.

**5.3. Stay at home orders.** We next examine a counterfactual where stay at home orders had been never issued. Figure 13 shows the average effect of no stay at home orders. On average, without stay at home orders, case growth rate would have been nearly 0.1 higher in late April. This translates to 80%  $[25\%, 170\%]$  more cases by the start of June. The results for deaths are similar, but slightly less precise, with no increase included in a 90 percent confidence interval.

FIGURE 10. Effect of nationally mandating masks for employees on April 1st in the US



In the left column, the dots are the average change in growth in each state. The blue line is the average across states of the change in growth. The shaded region is a point-wise 90% confidence interval. The right column shows the change in cases or deaths relative to the baseline of actual policies.

FIGURE 11. Effect of leaving non-essential businesses open in Washington

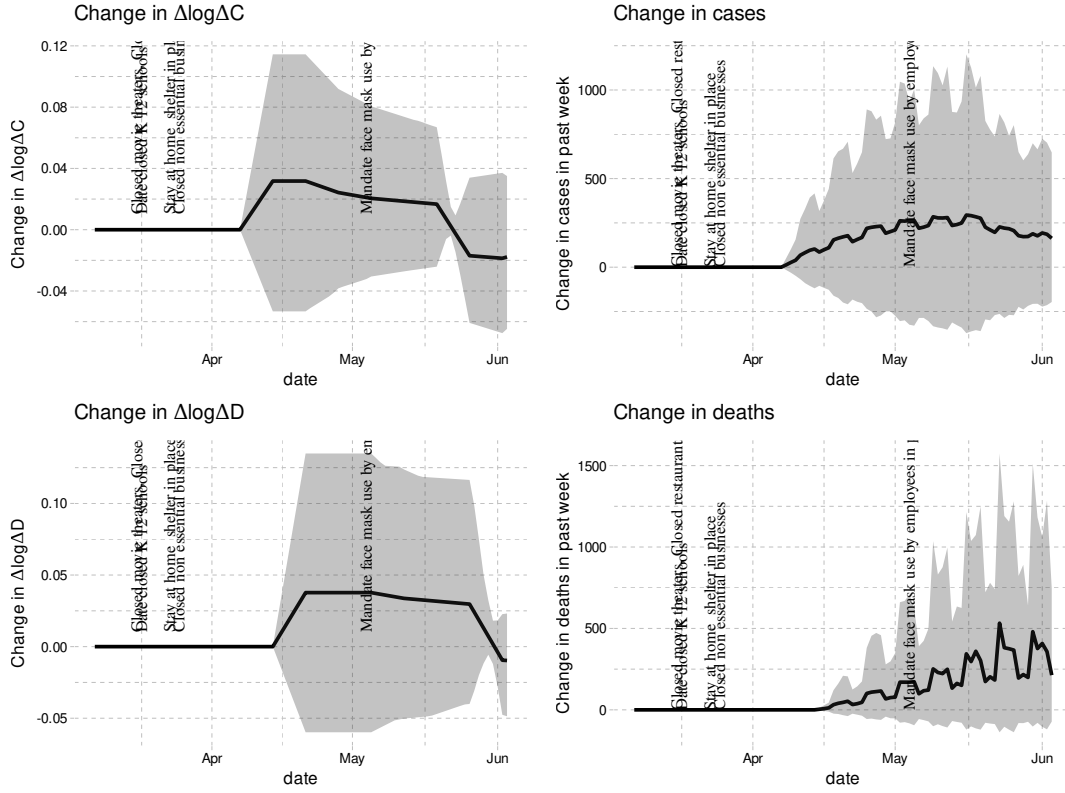


FIGURE 12. Effect of leaving non-essential businesses open in the US

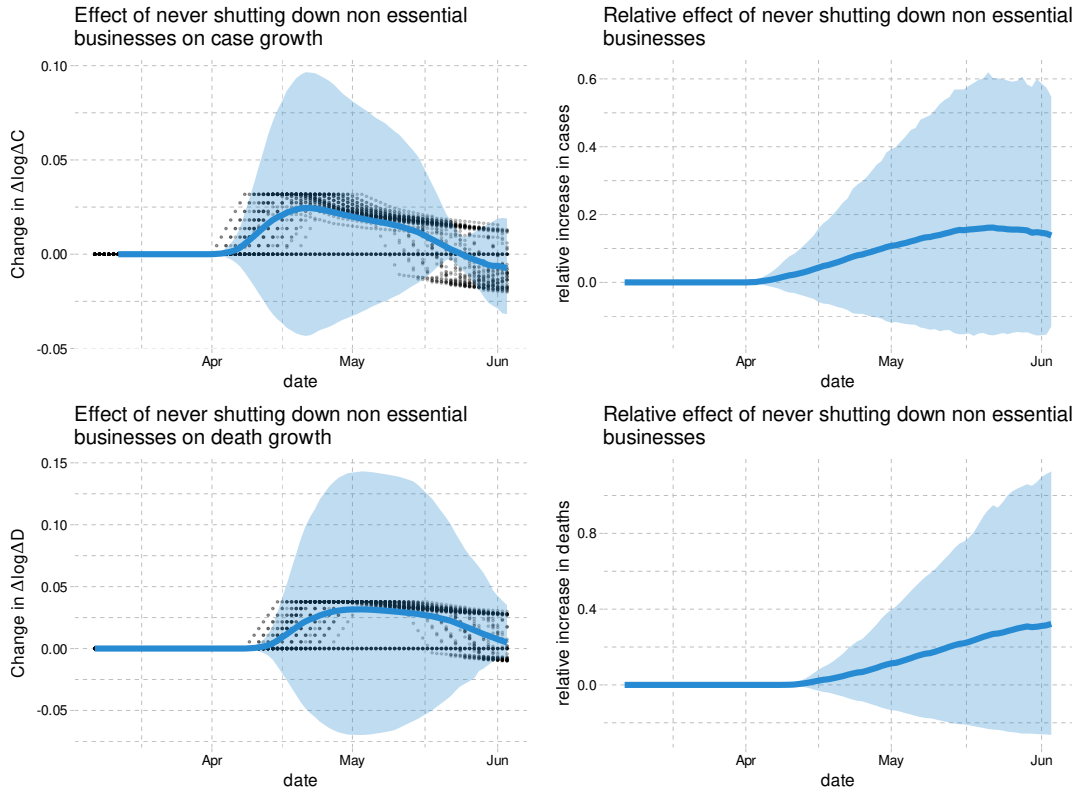
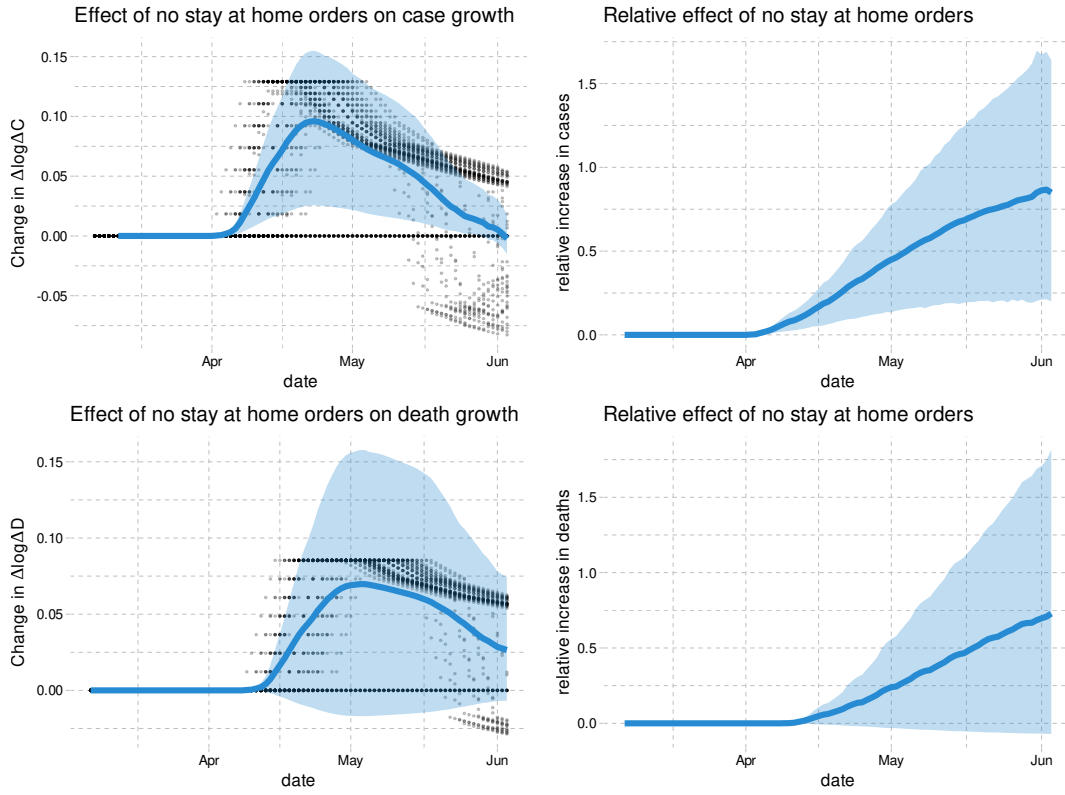


FIGURE 13. Effect of having no stay at home orders in the US

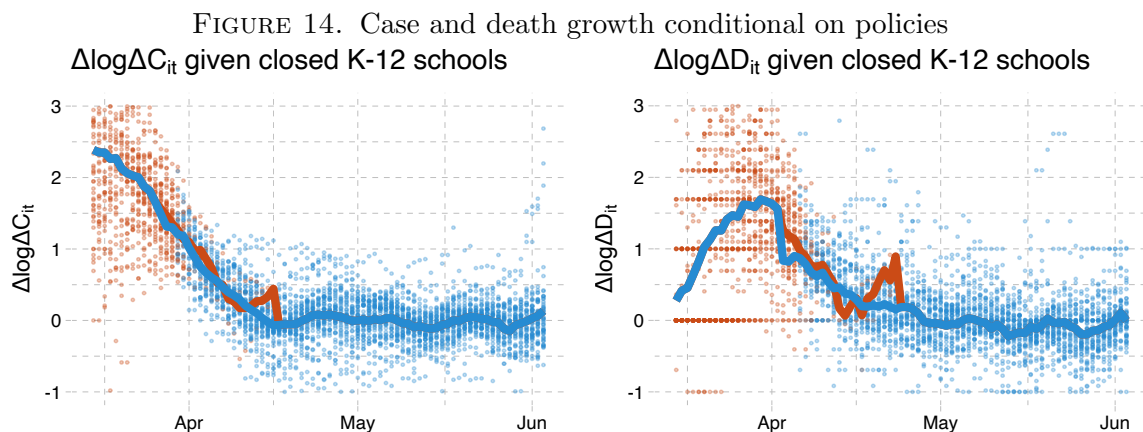


## 6. COUNTERFACTUAL EFFECT OF REMOVING ALL POLICIES AND ITS SENSITIVITY

We now consider the impact of changing from the observed policies to none. Figure 15 shows the average across states of the change in case growth and relative increase in cases under a specification without past national case variables. Removing policies leads to an increase of above 0.2 in case growth throughout April and May. The confidence interval is fairly wide, and its upper bound includes a very large increase in cases by the end of May. The right panel displays the national increase in aggregate cases without any policy intervention. The estimates imply at least a 7 fold increase in cases with a large upper bound by the end of May, or at least 14 million additional cases. The estimated impact on deaths is larger than cases, and even more imprecise.

The effect of removing all policies includes the effect of school closures. The visual evidence on growth rates for states with and without school closures, presented below, suggest that there may be a potentially large effect, though the history is very short. The main results presented in Section 3 also support the hypothesis that the school closures were important at lowering the growth rates. This evidence is consistent with the emerging prevalence of Covid-19 among children aged 10-17, pointing that although their transmission and susceptibility rates are twice lower than adults in the group 20-30, their contact rates are much higher (Davies et al. (2020)). This type of evidence, as well as evidence that children carry amounts of viral loads similar to those in the older age groups (?), led Germany to make the early decision of closing schools.

As discussed above, there is little variation across states in the timing of school closures. Consequently, the effect of school closures is difficult to identify statistically, because it is hard to separate it from aggregate time effect, and its estimate is sensitive to an inclusion of



In these figures, red points are the case or death growth rate in states without each policy 14 (or 21 for deaths) days earlier. Blue points are states with each policy 14 (or 21 for deaths) days earlier. The red line is the average across states without each policy. The blue line is the average across states with each policy.

some aggregate variables such as national cases. To support this point, Figure 16 shows the effect of removing all policies on cases based on the estimates with national cases included as information. When national case variables are included in the specification, the estimated effect of school closures, and hence that of removing all policies, is much smaller with a 90% confidence interval of  $[0,10]$  fold increases.

Given this sensitivity, we conclude that there still exists a lot of uncertainty as to the effect of removing all policies, especially schooling. The impact of not implementing any policies on cases and deaths can be quite large, but the effect of school closures, hence that of removing all policies, is not well identified statistically from the US state-level data alone, because of the lack of cross-sectional variations. Any analyses of re-opening plans need to be aware of this uncertainty. An important research question is how to resolve this uncertainty using additional data sources.

FIGURE 15. Effect of removing policies on cases in the US under a specification with only state-level cases/deaths as information

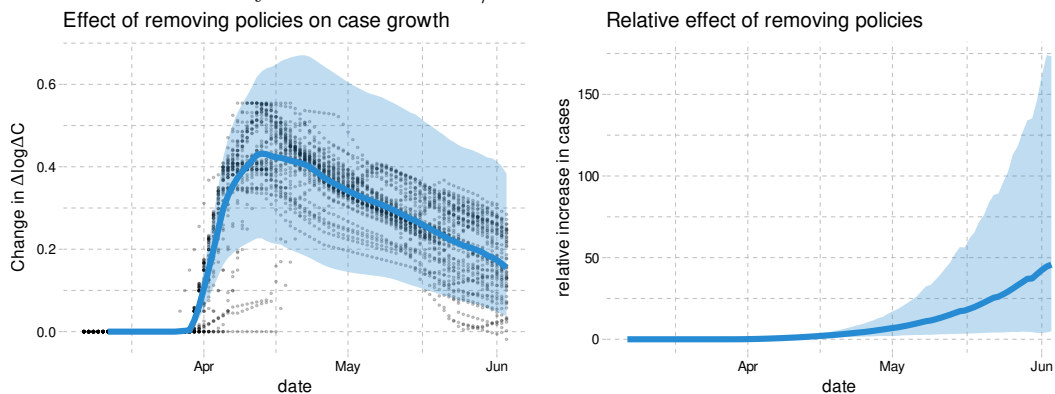
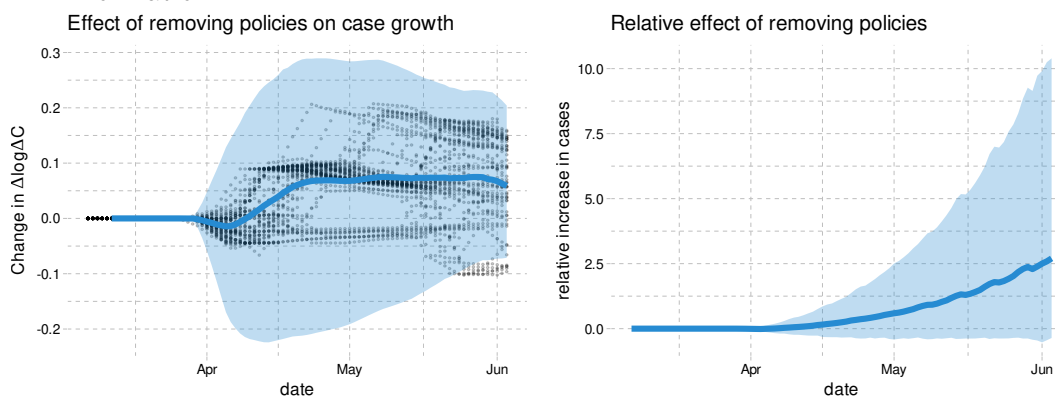


FIGURE 16. Effect of removing policies on cases in the US under a specification with both state-level cases/deaths and national-level cases/deaths as information



## 7. CONCLUSION

This paper assesses the effects of policies on the spread of Covid-19 in the US using the US state-level data on cases, tests, policies, and social distancing behavior measures from Google Mobility Reports. Our findings are summarized as follows.

First, our empirical analysis indicates that mandating face masks has reduced the spread of Covid-19 without affecting people’s social distancing behavior measured by Google Mobility Reports. Our counterfactual experiment based on the estimated model suggests that if all states had have adopted mandatory face mask policy on April 1st of 2020, then the number of deaths by the end of May would have been smaller by as much as 17 to 55 percent, which roughly translates into 17 to 55 thousand saved lives.

Second, we find that keeping non-essential businesses open would have led to a -20 to 60% higher number of cases while not implementing stay at home orders would have increased cases by 25 to 170 % nationally by the start of June.

Third, we find considerable uncertainty over the impact of all policies combined on case or death growth because it is difficult to identify the effect of school closures from the US state-level data due to the lack of cross-sectional variations in the timing of school closures across states.

Fourth, our analysis shows that people voluntarily reduce their visits to workplace, transit, grocery, and retails when they receive information on a higher number of new cases and deaths. This suggests that individuals make decisions to voluntarily limit their contact with others in response to greater transmission risks, leading to an important feedback mechanism that affects future cases and deaths. Model simulations that ignore this voluntary behavioral response to information on transmission risks would over-predict the future number of cases and deaths.

Beyond these findings, our paper presents a useful conceptual framework to investigate the relative roles of policies and information on determining the spread of Covid-19 through their impact on people’s behavior. Our causal model allows us to explicitly define counterfactual scenarios to properly evaluate the effect of alternative policies on the spread of Covid-19. More broadly, our causal framework can be useful for quantitatively analyzing not only health outcomes but also various economic outcomes (Bartik et al., 2020; Chetty et al., 2020).

## REFERENCES

- Abaluck, Jason, Judith A. Chevalier, Nicholas A. Christakis, Howard Paul Forman, Edward H. Kaplan, Albert Ko, and Sten H. Vermund. 2020. “The Case for Universal Cloth Mask Adoption and Policies to Increase Supply of Medical Masks for Health Workers.” URL <https://ssrn.com/abstract=3567438>.



- Abouk, Rahi and Babak Heydari. 2020. “The Immediate Effect of COVID-19 Policies on Social Distancing Behavior in the United States.” *medRxiv* URL <https://www.medrxiv.org/content/early/2020/04/28/2020.04.07.20057356>.
- Acemoglu, Daron, Victor Chernozhukov, Iván Werning, and Michael D Whinston. 2020. “Optimally Targeted Lockdowns in a Multi-Group SIR model.” Tech. rep., National Bureau of Economic Research.
- Alvarez, Fernando E, David Argente, and Francesco Lippi. 2020. “A simple planning problem for covid-19 lockdown.” Tech. rep., National Bureau of Economic Research.
- Andersen, Martin. 2020. “Early Evidence on Social Distancing in Response to COVID-19 in the United States.” Tech. rep., UNC Greensboro.
- Atkeson, Andrew. 2020a. “How Deadly is COVID-19? Understanding the Difficulties with Estimation of its Fatality Rate.” Tech. rep., National Bureau of Economic Research.
- . 2020b. “What Will be the Economic Impact of COVID-19? Rough Estimates of Disease Scenarios.” Tech. rep., National Bureau of Economic Research.
- Avery, Christopher, William Bossert, Adam Clark, Glenn Ellison, and Sara Fisher Ellison. 2020. “Policy Implications of Models of the Spread of Coronavirus: Perspectives and Opportunities for Economists.” NBER Working Papers 27007, National Bureau of Economic Research, Inc. URL <https://ideas.repec.org/p/nbr/nberwo/27007.html>.
- Baqae, David, Emmanuel Farhi, Michael J Mina, and James H Stock. 2020. “Reopening Scenarios.” Tech. rep., National Bureau of Economic Research.
- Bartik, Alexander, Marianne Bertrand, Feng Lin, Jesse Rothstein, and Matthew Unrath. 2020. “Measuring the Labor Market at the Onset of the COVID-19 Crisis.” Tech. rep. URL [https://papers.ssrn.com/sol3/papers.cfm?abstract\\_id=3633053](https://papers.ssrn.com/sol3/papers.cfm?abstract_id=3633053).
- Cereda, D, M Tirani, F Rovida, V Demicheli, M Ajelli, P Poletti, F Trentini, G Guzzetta, V Marziano, A Barone, M Magoni, S Deandrea, G Diurno, M Lombardo, M Faccini, A Pan, R Bruno, E Pariani, G Grasselli, A Piatti, M Gramegna, F Baldanti, A Melegaro, and S Merler. 2020. “The early phase of the COVID-19 outbreak in Lombardy, Italy.”
- Chen, Shuowen, Victor Chernozhukov, and Iván Fernández-Val. 2019. “Mastering panel metrics: causal impact of democracy on growth.” In *AEA Papers and Proceedings*, vol. 109. 77–82.
- Chetty, Raj, John N Friedman, Nathaniel Hendren, and Michael Stepner. 2020. “Real-Time Economics: A New Platform to Track the Impacts of COVID-19 on People, Businesses, and Communities Using Private Sector Data.” Tech. rep., Mimeo.
- Coibion, Olivier, Yuriy Gorodnichenko, and Michael Weber. 2020. “Labor markets during the covid-19 crisis: A preliminary view.” Tech. rep., National Bureau of Economic Research.
- Courtemanche, Charles, Joseph Garuccio, Anh Le, Joshua Pinkston, and Aaron Yelowitz. 2020. “Strong Social Distancing Measures In The United States Reduced The COVID-19 Growth Rate.” *Health Affairs* :10.1377/hlthaff.2020.00608 URL <https://doi.org/10.1377/hlthaff.2020.00608>.
- Davies, Nicholas G, Petra Klepac, Yang Liu, Kiesha Prem, Mark Jit, Rosalind M Eggo, CMMID COVID-19 working group et al. 2020. “Age-dependent effects in the transmission and control of COVID-19 epidemics.” *MedRxiv* .
- Ferguson, Neil, Daniel Laydon, Gemma Nedjati-Gilani, Natsuko Imai, Kylie Ainslie, Marc Baguelin, Sangeeta Bhatia, Adhiratha Boonyasiri, Zulma Cucunubá, Gina Cuomo-Dannenburg, Amy Dighe, Ilaria Dorigatti, Han Fu, Katy Gaythorpe, Will Green, Arran Hamlet, Wes Hinsley, Lucy C Okell, Sabine van Elsland, Hayley Thompson, Robert Verity, Erik Volz, Haowei Wang, Yuanrong Wang, Patrick GT Walker, Caroline Walters, Peter Winskill, Charles Whittaker, Christl A Donnelly, Steven Riley, and Azra C Ghani. 2020. “Report 9: Impact of non-pharmaceutical interventions (NPIs) to reduce COVID-19 mortality and healthcare demand.” Tech. rep., Imperial College London.
- Fernández-Villaverde, Jesús and Charles I Jones. 2020. “Estimating and Simulating a SIRD Model of COVID-19 for Many Countries, States, and Cities.” Working Paper 27128, National Bureau of Economic Research. URL <http://www.nber.org/papers/w27128>.
- Gitmez, Arda, Konstantin Sonin, and Austin L. Wright. 2020. “Political Economy of Crisis Response.” Tech. rep., University of Chicago, Becker Friedman Institute for Economics Working Paper No. 2020-68.
- Greenhalgh, Trisha, Manuel B Schmid, Thomas Czypionka, Dirk Bassler, and Laurence Gruer. 2020. “Face masks for the public during the covid-19 crisis.” *BMJ* 369. URL <https://www.bmj.com/content/369/bmj.m1435>.

- Greenland, Sander, Judea Pearl, and James M Robins. 1999. “Causal diagrams for epidemiologic research.” *Epidemiology* :37–48.
- Gupta, Sumedha, Thuy D Nguyen, Felipe Lozano Rojas, Shyam Raman, Byungkyu Lee, Ana Bento, Kosali I Simon, and Coady Wing. 2020. “Tracking Public and Private Responses to the COVID-19 Epidemic: Evidence from State and Local Government Actions.” Working Paper 27027, National Bureau of Economic Research. URL <http://www.nber.org/papers/w27027>.
- Haavelmo, Trygve. 1944. “The probability approach in econometrics.” *Econometrica: Journal of the Econometric Society* :iii–115.
- Harris, Jeffrey E. 2020. “The Subways Seeded the Massive Coronavirus Epidemic in New York City.” Working Paper 27021, National Bureau of Economic Research. URL <http://www.nber.org/papers/w27021>.
- Heckman, James J. and Edward J. Vytlačil. 2007. “Econometric Evaluation of Social Programs, Part I: Causal Models, Structural Models and Econometric Policy Evaluation.” In *Handbook of Econometrics, Handbook of Econometrics*, vol. 6, edited by J.J. Heckman and E.E. Leamer, chap. 70. Elsevier. URL <https://ideas.repec.org/h/eee/ecochnp/6b-70.html>.
- Hernán, M.A. and J.M. Robins. 2020. *Causal Inference: What If*. Chapman & Hall/CRC.
- Hou, Yixuan J., Kenichi Okuda, Caitlin E. Edwards, David R. Martinez, Takanori Asakura, Kenneth H. Dinnon III, Takafumi Kato, Rhianna E. Lee, Boyd L. Yount, Teresa M. Mascenik, Gang Chen, Kenneth N. Olivier, Andrew Ghio, Longping V. Tse, Sarah R. Leist, Lisa E. Gralinski, Alexandra Schäfer, Hong Dang, Rodney Gilmore, Satoko Nakano, Ling Sun, M. Leslie Fulcher, Alessandra Livraghi-Butrico, Nathan I. Nicely, Mark Cameron, Cheryl Cameron, David J. Kelvin, Aravinda de Silva, David M. Margolis, Alena Markmann, Luther Bartelt, Ross Zumwalt, Fernando J. Martinez, Steven P. Salvatore, Alain Borczuk, Purushothama R. Tata, Vishwaraj Sontake, Adam Kimple, Ilona Jaspers, Wanda K. O’Neal, Scott H. Randell, Richard C. Boucher, and Ralph S. Baric. 2020. “SARS-CoV-2 Reverse Genetics Reveals a Variable Infection Gradient in the Respiratory Tract.” *Cell* URL <https://doi.org/10.1016/j.cell.2020.05.042>.
- Howard, Jeremy, Austin Huang, Zhiyuan Li, Zeynep Tufekci, Vladimir Zdimal, Helene-Mari van der Westhuizen, Arne von Delft, Amy Price, Lex Fridman, Lei-Han Tang, Viola Tang, Gregory Watson, Christina Bax, Reshama Shaikh, Frederik Questier, Danny Hernandez, Larry Chu, Christina Ramirez, and Anne Rimoin. 2020. “Face Masks Against COVID-19: An Evidence Review.” URL <https://doi.org/10.20944/preprints202004.0203.v1>.
- Hsiang, Solomon, Daniel Allen, Sebastien Annan-Phan, Kendon Bell, Ian Bolliger, Trinetta Chong, Hannah Druckenmiller, Andrew Hultgren, Luna Yue Huang, Emma Krasovich, Peiley Lau, Jaecheol Lee, Esther Rolf, Jeanette Tseng, and Tiffany Wu. 2020. “The Effect of Large-Scale Anti-Contagion Policies on the Coronavirus (COVID-19) Pandemic.” *medRxiv* URL <https://www.medrxiv.org/content/early/2020/04/29/2020.03.22.20040642>.
- Imbens, Guido W. and Donald B. Rubin. 2015. *Causal Inference for Statistics, Social, and Biomedical Sciences: An Introduction*. Cambridge University Press.
- Jones, Terry C, Barbara Mühlemann, Talitha Veith, Guido Biele, Marta Zuchowski, Jörg Hoffmann, Angela Stein, Anke Edelmann, Victor Max Corman, and Christian Drosten. 2020. “An analysis of SARS-CoV-2 viral load by patient age.” *medRxiv* URL <https://www.medrxiv.org/content/early/2020/06/09/2020.06.08.20125484>.
- Keppo, Juusi, Elena Quercioli, Mariana Kudlyak, Lones Smith, and Andrea Wilson. 2020. “The behavioral SIR model, with applications to the Swine Flu and COVID-19 pandemics.” In *Virtual Macro Seminar*.
- Li, Qun, Xuhua Guan, Peng Wu, Xiaoye Wang, Lei Zhou, Yeqing Tong, Ruiqi Ren, Kathy S.M. Leung, Eric H.Y. Lau, Jessica Y. Wong, Xuesen Xing, Nijuan Xiang, Yang Wu, Chao Li, Qi Chen, Dan Li, Tian Liu, Jing Zhao, Man Liu, Wenxiao Tu, Chuding Chen, Lianmei Jin, Rui Yang, Qi Wang, Suhua Zhou, Rui Wang, Hui Liu, Yinbo Luo, Yuan Liu, Ge Shao, Huan Li, Zhongfa Tao, Yang Yang, Zhiqiang Deng, Boxi Liu, Zhitao Ma, Yanping Zhang, Guoqing Shi, Tommy T.Y. Lam, Joseph T. Wu, George F. Gao, Benjamin J. Cowling, Bo Yang, Gabriel M. Leung, and Zijian Feng. 2020. “Early Transmission Dynamics in Wuhan, China, of Novel Coronavirus-Infected Pneumonia.” *New England Journal of Medicine* 382 (13):1199–1207. URL <https://doi.org/10.1056/NEJMoa2001316>. PMID: 31995857.
- Linton, Natalie M., Tetsuro Kobayashi, Yichi Yang, Katsuma Hayashi, Andrei R. Akhmetzhanov, Sungmok Jung, Baoyin Yuan, Ryo Kinoshita, and Hiroshi Nishiura. 2020. “Incubation Period and Other Epidemiological Characteristics of 2019 Novel Coronavirus Infections with Right Truncation: A Statistical

- Analysis of Publicly Available Case Data.” *Journal of Clinical Medicine* 9 (2):538. URL <http://dx.doi.org/10.3390/jcm9020538>.
- LLC, Google. 2020. “Google COVID-19 Community Mobility Reports.” URL <https://www.google.com/covid19/mobility/>.
- Maloney, William F. and Temel Taskin. 2020. “Determinants of Social Distancing and Economic Activity during COVID-19: A Global View.” Tech. Rep. Policy Research working paper; no. WPS 9242; COVID-19 (Coronavirus), World Bank Group. URL <http://documents.worldbank.org/curated/en/325021589288466494/Determinants-of-Social-Distancing-and-Economic-Activity-during-COVID-19-A-Global-View>.
- McAdams, David. 2020. “Nash SIR: An Economic-Epidemiological Model of Strategic Behavior During a Viral Epidemic.” *arXiv preprint arXiv:2006.10109*.
- MIDAS. 2020. “MIDAS 2019 Novel Coronavirus Repository: Parameter Estimates.” URL [https://github.com/midas-network/COVID-19/tree/master/parameter\\_estimates/2019\\_novel\\_coronavirus](https://github.com/midas-network/COVID-19/tree/master/parameter_estimates/2019_novel_coronavirus).
- Neyman. 1925. “On the application of probability theory to agricultural experiments. Essay on principles. Section 9.” *Statistical Science (1990)* :465–472.
- Pei, Sen, Sasikiran Kandula, and Jeffrey Shaman. 2020. “Differential Effects of Intervention Timing on COVID-19 Spread in the United States.” *medRxiv* URL <https://www.medrxiv.org/content/early/2020/05/20/2020.05.15.20103655>.
- Peters, Jonas, Dominik Janzing, and Schölkopf Bernhard. 2017. *Elements of causal inference: foundations and learning algorithms*. Mass.
- Raifman, Julia, Kristen Nocka, David Jones, Jacob Bor, Sarah Ketchen Lipson, Jonathan Jay, Philip Chan, Megan Cole Brahim, Carolyn Hoffman, Claire Corkish, Elizabeth Ferrara, Elizabeth Long, Emily Baroni, Faith Contador, Hannah Simon, Morgan Simko, Rachel Scheckman, Sarah Brewer, Sue Kulkarni, Felicia Heykoop, Manish Patel, Aishwarya Vidyasagan, Andrew Chiao, Cara Safon, and Samantha Burkhart. 2020. “COVID-19 US state policy database.” URL <https://tinyurl.com/statepolicies>.
- Rubin, Donald B. 1974. “Estimating causal effects of treatments in randomized and nonrandomized studies.” *Journal of educational Psychology* 66 (5):688.
- Sanche, Steven, Yen Ting Lin, Chonggang Xu, Ethan Romero-Severson, Nick Hengartner, and Ruian Ke. 2020. “High Contagiousness and Rapid Spread of Severe Acute Respiratory Syndrome Coronavirus 2.” *Emerging Infectious Diseases* 26 (7).
- Siordia, Juan A. 2020. “Epidemiology and clinical features of COVID-19: A review of current literature.” *Journal of Clinical Virology* 127:104357. URL <http://www.sciencedirect.com/science/article/pii/S1386653220300998>.
- Stock, James. 2020a. “Reopening the Coronavirus-Closed Economy.” Tech. rep., Hutchins Center Working Paper #60.
- Stock, James H. 2020b. “Data Gaps and the Policy Response to the Novel Coronavirus.” Working Paper 26902, National Bureau of Economic Research. URL <http://www.nber.org/papers/w26902>.
- Strotz, Robert H and Herman OA Wold. 1960. “Recursive vs. nonrecursive systems: An attempt at synthesis (part i of a triptych on causal chain systems).” *Econometrica: Journal of the Econometric Society* :417–427.
- Tian, Liang, Xuefei Li, Fei Qi, Qian-Yuan Tang, Viola Tang, Jiang Liu, Zhiyuan Li, Xingye Cheng, Xuanxuan Li, Yingchen Shi, Haiguang Liu, and Lei-Han Tang. 2020. “Calibrated Intervention and Containment of the COVID-19 Pandemic.”
- Tinbergen, J. 1930. “Determination and interpretation of supply curves: an example.” Tech. rep., Zeitschrift für Nationalökonomie.
- Wheaton, William C. and Anne Kinsella Thompson. 2020. “The Geography of Covid-19 Growth in the US: Counties and Metropolitan Areas.” Tech. rep., MIT.
- White House, The. 2020. “Guidelines for Opening Up America Again.” URL <https://www.whitehouse.gov/openingamerica/>.
- Wright, Austin L., Konstantin Sonin, Jesse Driscoll, and Jarnickae Wilson. 2020. “Poverty and Economic Dislocation Reduce Compliance with COVID-19 Shelter-in-Place Protocols.” *SSRN Electronic Journal*.
- Wright, Philip G. 1928. *Tariff on animal and vegetable oils*. Macmillan Company, New York.
- Zhang, Juanjuan, Maria Litvinova, Wei Wang, Yan Wang, Xiaowei Deng, Xinghui Chen, Mei Li, Wen Zheng, Lan Yi, Xinhua Chen, Qianhui Wu, Yuxia Liang, Xiling Wang, Juan Yang, Kaiyuan Sun, Ira M

- Longini, M Elizabeth Halloran, Peng Wu, Benjamin J Cowling, Stefano Merler, Cecile Viboud, Alessandro Vespignani, Marco Ajelli, and Hongjie Yu. 2020a. "Evolving epidemiology and transmission dynamics of coronavirus disease 2019 outside Hubei province, China: a descriptive and modelling study." *The Lancet Infectious Diseases* URL <http://www.sciencedirect.com/science/article/pii/S1473309920302309>.
- Zhang, Renyi, Yixin Li, Annie L. Zhang, Yuan Wang, and Mario J. Molina. 2020b. "Identifying airborne transmission as the dominant route for the spread of COVID-19." *Proceedings of the National Academy of Sciences* URL <https://www.pnas.org/content/early/2020/06/10/2009637117>.

## APPENDIX A. DATA CONSTRUCTION

A.1. **Measuring  $\Delta C$  and  $\Delta \log \Delta C$ .** We have three data sets with information on daily cumulative confirmed cases in each state. As shown in table 8, these cumulative case numbers are very highly correlated. However, table 9 shows that the numbers are different more often than not.

	NYT	JHU	CTP
NYT	1.00000	0.99995	0.99991
JHU	0.99995	1.00000	0.99987
CTP	0.99991	0.99987	1.00000

TABLE 8. Correlation of cumulative cases

	1	2	3
NYT	1.00	0.28	0.37
JHU	0.28	1.00	0.33
CTP	0.37	0.33	1.00

TABLE 9. Portion of cumulative cases that are equal between data sets

Figure 17 shows the evolution of new cases in each of these three datasets. In all cases, daily changes in cumulative cases displays some excessive volatility. This is likely due to delays and bunching in testing and reporting of results. Table 10 shows the variance of log new cases in each data set, as well as their correlations. As shown, the correlations are approximately 0.9. Also of note, log of The New York Times new case numbers has the lowest variance.<sup>26</sup> In our subsequent results, we will primarily use the case numbers from The New York Times.

	NYT	JHU	CTP
NYT	1.00	0.88	0.87
JHU	0.88	1.00	0.80
CTP	0.87	0.80	1.00
Variance	5.63	7.02	6.64

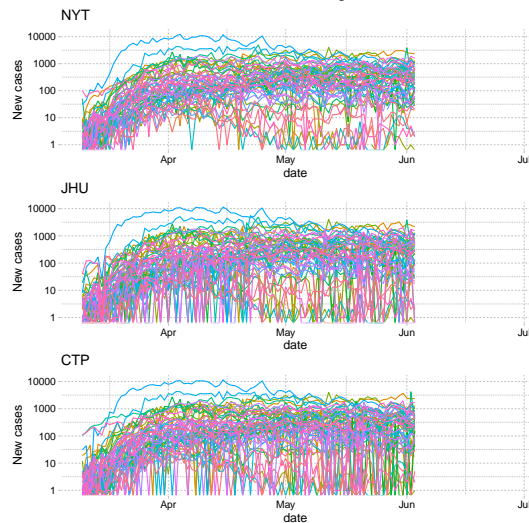
TABLE 10. Correlation and variance of log daily new cases

For most of our results, we focus on new cases in a week instead of in a day. We do this for two reasons as discussed in the main text. First, a decline of new cases over two weeks has become a key metric for decision makers. Secondly, aggregating to weekly new cases smooths out the noise associated with the timing of reporting and testing.

Table 11 reports the correlation and variance of weekly log new cases across the three data sets. Figure 18 shows the evolution of weekly new cases in each state over time.

<sup>26</sup>This comparison is somewhat sensitive to how you handle negative and zero cases when taking logs. Here, we replaced  $\log(0)$  with  $-1$ . In our main results, we work with weekly new cases, which are very rarely zero.

FIGURE 17. Daily cases



Each line shows daily new cases in a state.

	NYT	JHU	CTP
NYT	1.00	0.99	0.99
JHU	0.99	1.00	0.99
CTP	0.99	0.99	1.00
Variance	4.15	4.33	4.20

TABLE 11. Correlation and variance of log weekly new cases

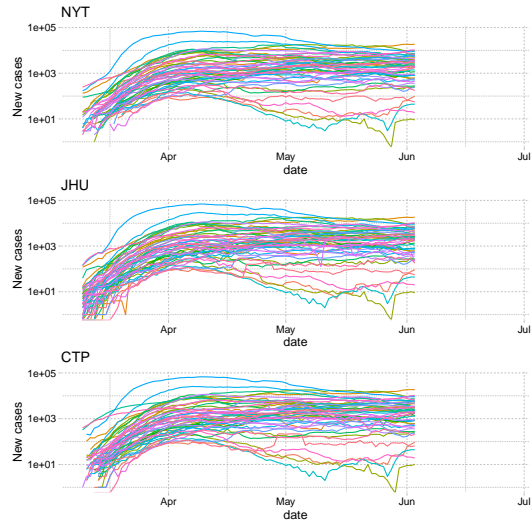
A.2. **Deaths.** Table 12 reports the correlation and variance of weekly deaths in the three data sets. Figure 19 shows the evolution of weekly deaths in each state. As with cases, we use death data from The New York Times in our main results.

	NYT	JHU	CTP
NYT	1.00	0.99	0.99
JHU	0.99	1.00	0.98
CTP	0.99	0.98	1.00
Variance	293262.32	288818.77	204037.51

TABLE 12. Correlation and variance of weekly deaths

A.3. **Tests.** Our test data comes from The Covid Tracking Project. Figure 21 shows the evolution of tests over time.

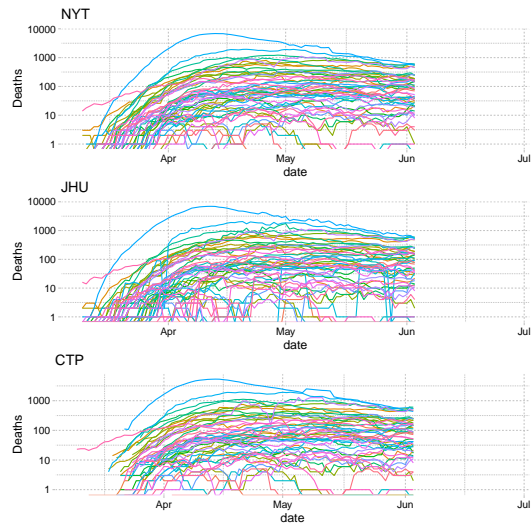
FIGURE 18. Weekly Cases




---

Each line shows weekly new cases in a state.

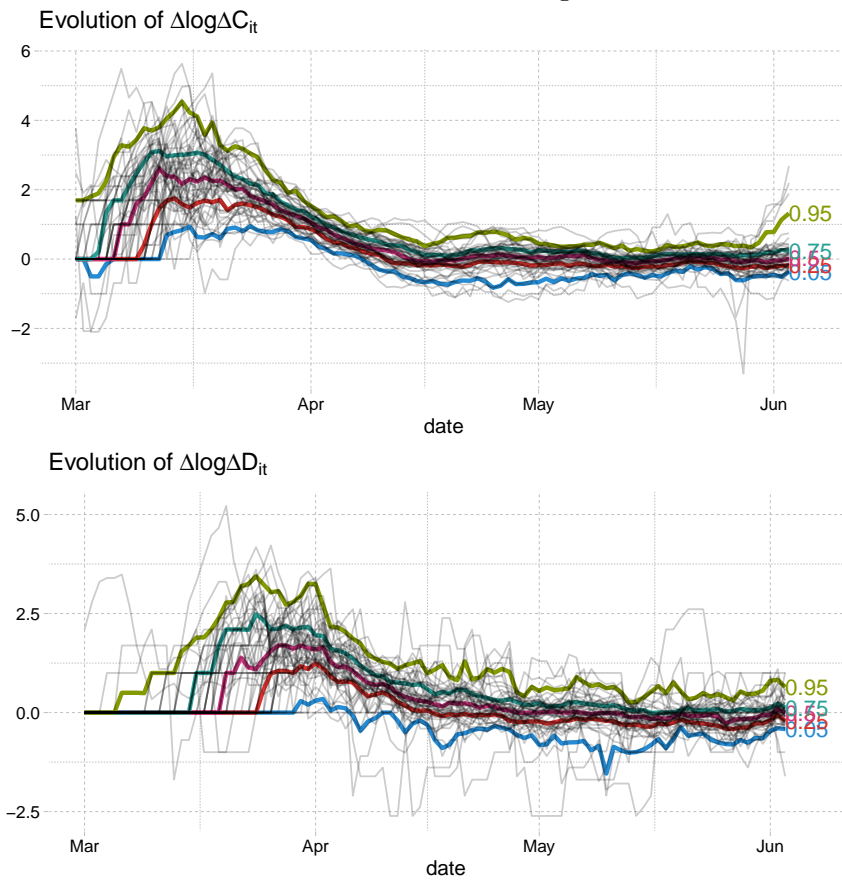
FIGURE 19. Weekly Deaths




---

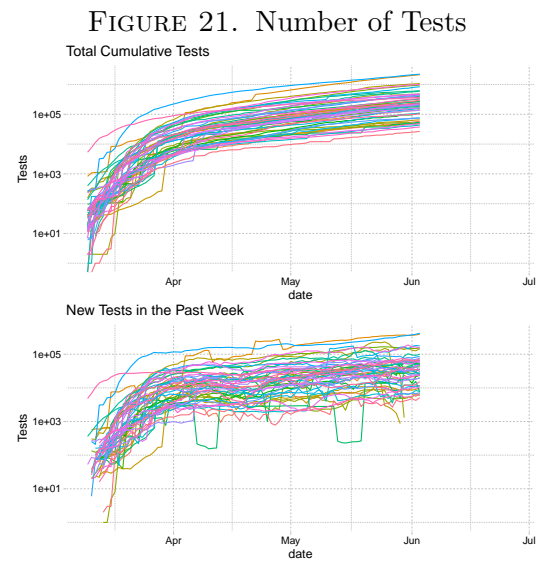
Each line shows weekly deaths in a state.

FIGURE 20. Case and death growth



Thin gray lines are case or death growth in each state and date. Thicker colored lines are quantiles of case or death growth conditional on date.

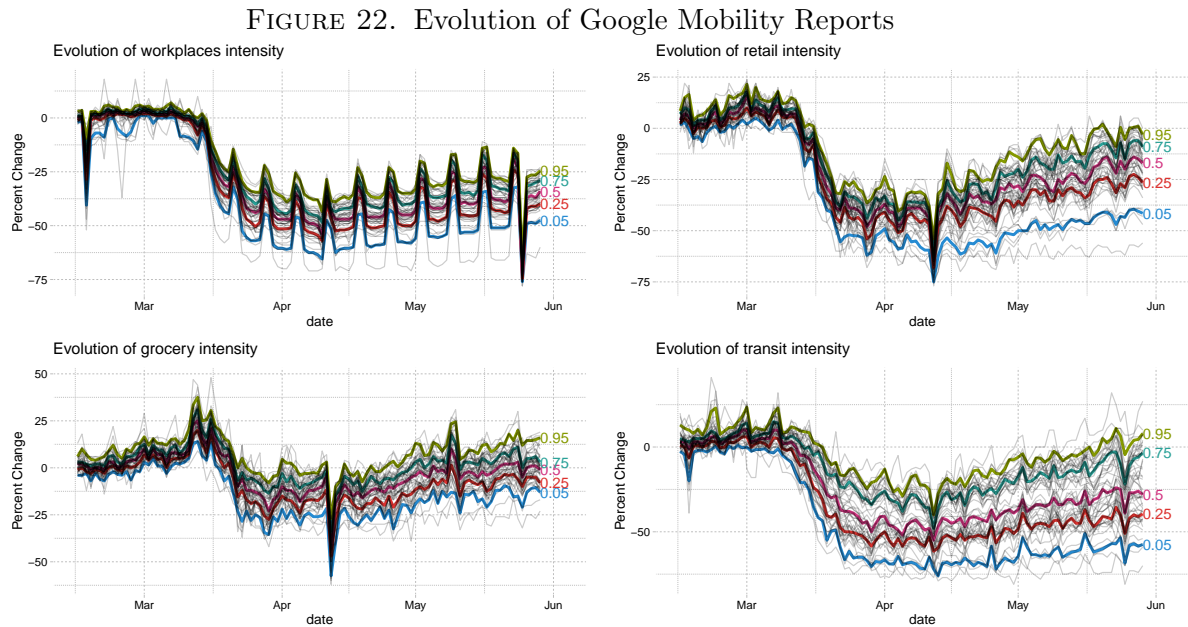




---

These figures use the “total test results” reported by The Covid Tracking Project. This is meant to reflect the number of people tested (as opposed to the number of specimens tested).

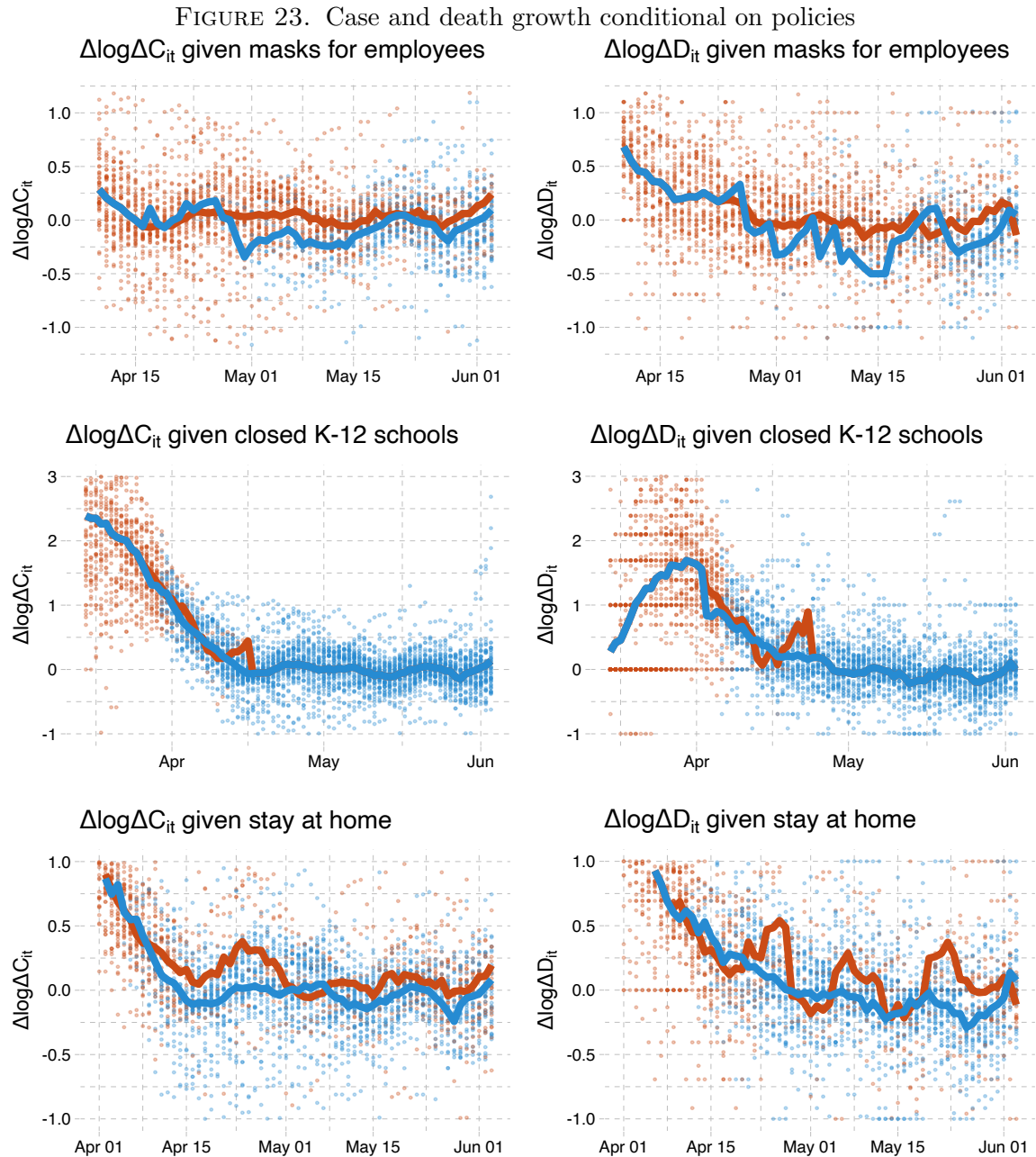
**A.4. Social Distancing Measures.** In measuring social distancing, we focus on Google Mobility Reports. This data has international coverage and is publicly available. Figure 22 shows the evolution of the four Google Mobility Reports variables that we use in our analysis.



This figure shows the evolution of Google Mobility Reports over time. Thin gray lines are the value of the variables in each state and date. Thicker colored lines are quantiles of the variables conditional on date.

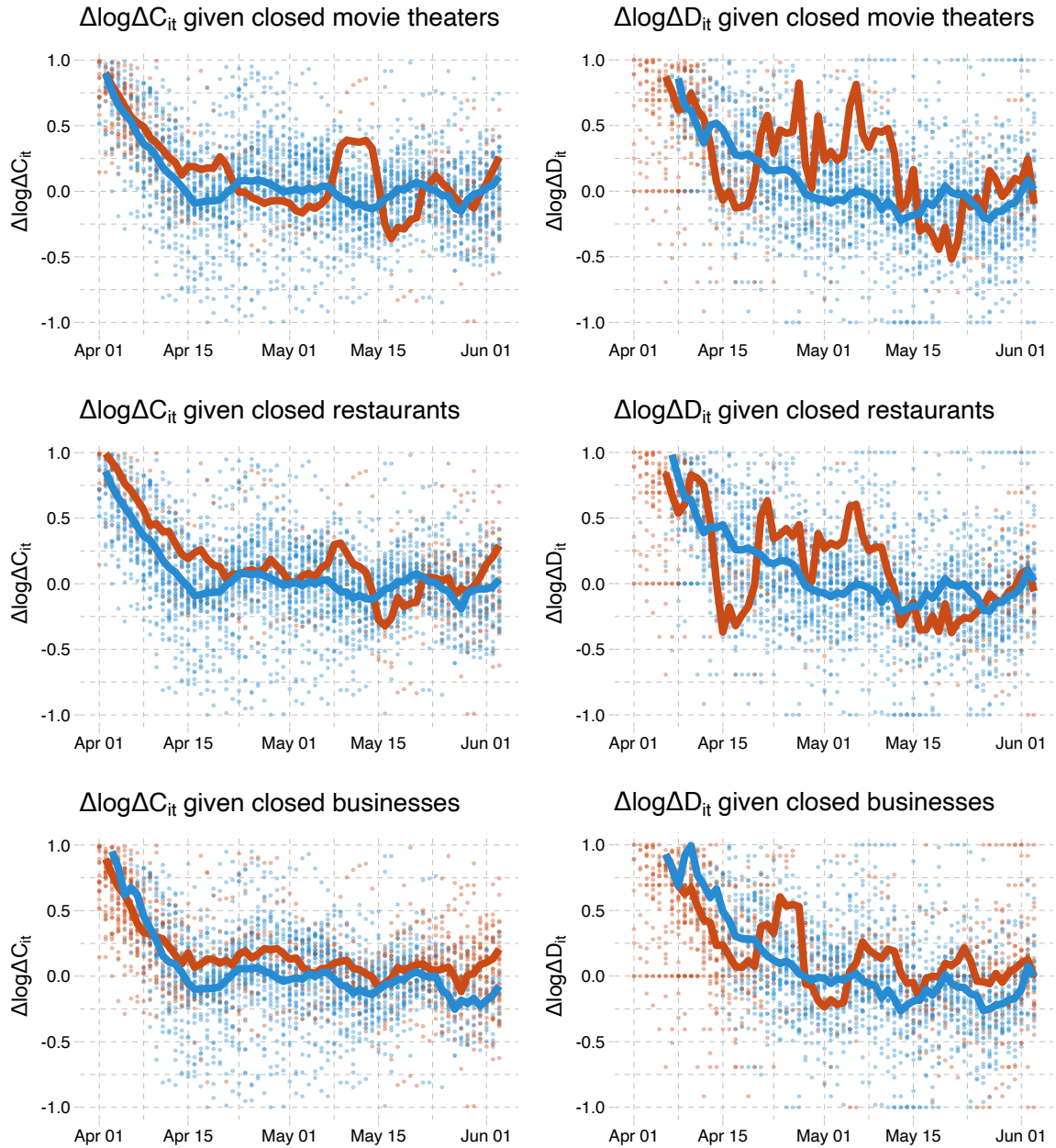
**A.5. Policy Variables.** We use the database on US state policies created by Raifman et al. (2020). As discussed in the main text, our analysis focuses on seven policies. For stay at home, closed nonessential businesses, closed K-12 schools, closed restaurants except takeout, and closed movie theaters, we double-checked any state for which Raifman et al. (2020) does not record a date. We filled in a few missing dates. Our modified data is available here. Our modifications fill in 1 value for school closures, 2 for stay at home, 3 for movie theater closure, and 4 for non-essential business closures. Table 13 displays all 25 dated policy variables in Raifman et al. (2020)'s database with our modifications described above.

**A.6. Timing.** There is a delay between infection and when a person is tested and appears in our case data. MIDAS (2020) maintain a list of estimates of the duration of various stages of Covid-19 infections. The incubation period, the time from infection to symptom onset, is widely believed to be 5 days. For example, using data from Wuhan, Li et al. (2020) estimate a mean incubation period of 5.2 days. Siordia (2020) reviews the literature and concludes the mean incubation period is 3-9 days.



In these figures, red points are the case or death growth rate in states without each policy 14 (or 21 for deaths) days earlier. Blue points are states with each policy 14 (or 21 for deaths) days earlier. The red line is the average across states without each policy. The blue line is the average across states with each policy.

FIGURE 24. Case and death growth conditional on policies



In these figures, red points are the case or death growth rate in states without each policy 14 (or 21 for deaths) days earlier. Blue points are states with each policy 14 (or 21 for deaths) days earlier. The red line is the average across states without each policy. The blue line is the average across states with each policy.

	N	Min	Median	Max
State of emergency	51	2020-02-29	2020-03-11	2020-03-16
Date closed K 12 schools	51	2020-03-13	2020-03-17	2020-04-03
Closed day cares	15	2020-03-16	2020-03-23	2020-04-06
Date banned visitors to nursing homes	30	2020-03-09	2020-03-16	2020-04-06
Closed non essential businesses	43	2020-03-19	2020-03-25	2020-04-06
Closed restaurants except take out	48	2020-03-15	2020-03-17	2020-04-03
Closed gyms	46	2020-03-16	2020-03-20	2020-04-03
Closed movie theaters	49	2020-03-16	2020-03-21	2020-04-06
Stay at home shelter in place	42	2020-03-19	2020-03-28	2020-04-07
End relax stay at home shelter in place	33	2020-04-24	2020-05-15	2020-06-05
Began to reopen businesses statewide	49	2020-04-20	2020-05-07	2020-05-29
Reopen restaurants	41	2020-04-24	2020-05-15	2020-06-01
Reopened gyms	31	2020-04-24	2020-05-16	2020-06-01
Reopened movie theaters	19	2020-04-27	2020-05-15	2020-06-01
Resumed elective medical procedures	35	2020-04-20	2020-04-30	2020-05-29
Mandate face mask use by all individuals in public spaces	17	2020-04-08	2020-04-20	2020-05-29
Mandate face mask use by employees in public facing businesses	39	2020-04-03	2020-05-01	2020-06-01
Stop Initiation of Evictions overall or due to COVID related issues	24	2020-03-16	2020-03-24	2020-04-20
Stop enforcement of evictions overall or due to COVID related issues	26	2020-03-15	2020-03-23	2020-04-20
Renter grace period or use of security deposit to pay rent	2	2020-04-10	2020-04-17	2020-04-24
Order freezing utility shut offs	34	2020-03-12	2020-03-19	2020-04-13
Froze mortgage payments	1	2020-03-21	2020-03-21	2020-03-21
Waived one week waiting period for unemployment insurance	36	2020-03-08	2020-03-18	2020-04-06

TABLE 13. State Policies

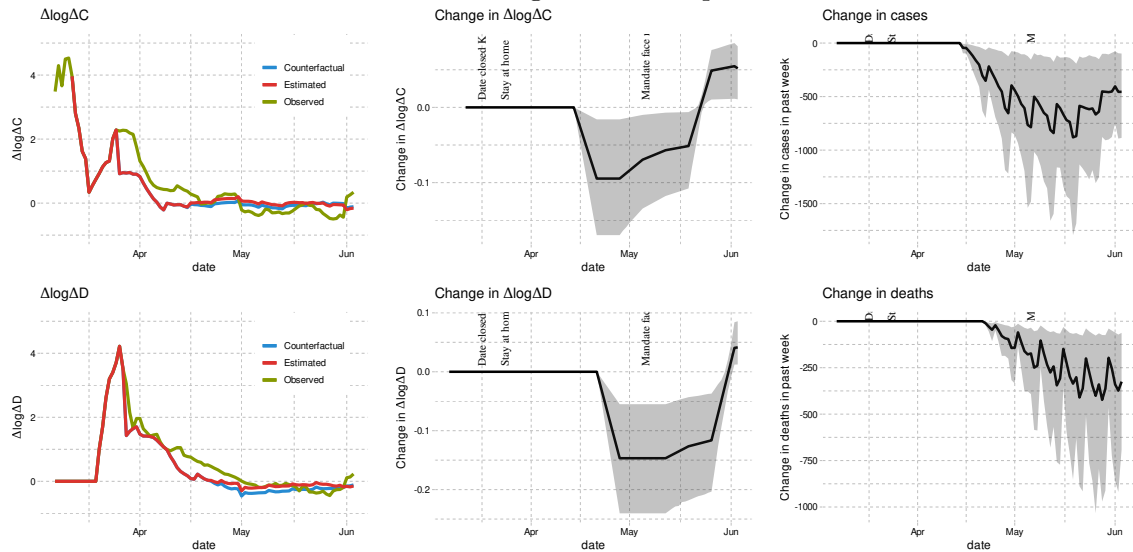
Estimates of the time between symptom onset and case reporting or death are less common. Using Italian data, Cereda et al. (2020) estimate an average of 7.3 days between symptom onset and reporting. Zhang et al. (2020a) find an average of 7.4 days using Chinese data from December to early February, but they find this period declined from 8.9 days in January to 5.4 days in the first week of February. Both of these papers on time from symptom onset to reporting have large confidence intervals covering approximately 1 to 20 days.

Studying publicly available data on infected persons diagnosed outside of Wuhan, Linton et al. (2020) estimate an average of 15 days from onset to death. Similarly, using publicly available reports of 140 confirmed COVID-19 cases in China, mostly outside Hubei Province, Sanche et al. (2020) estimate the time from onset to death to be 16.1 days.

Based on the above, we expect a delay of roughly two weeks between changes in behavior or policies, and changes in reported cases while a corresponding delay of roughly three weeks for deaths.

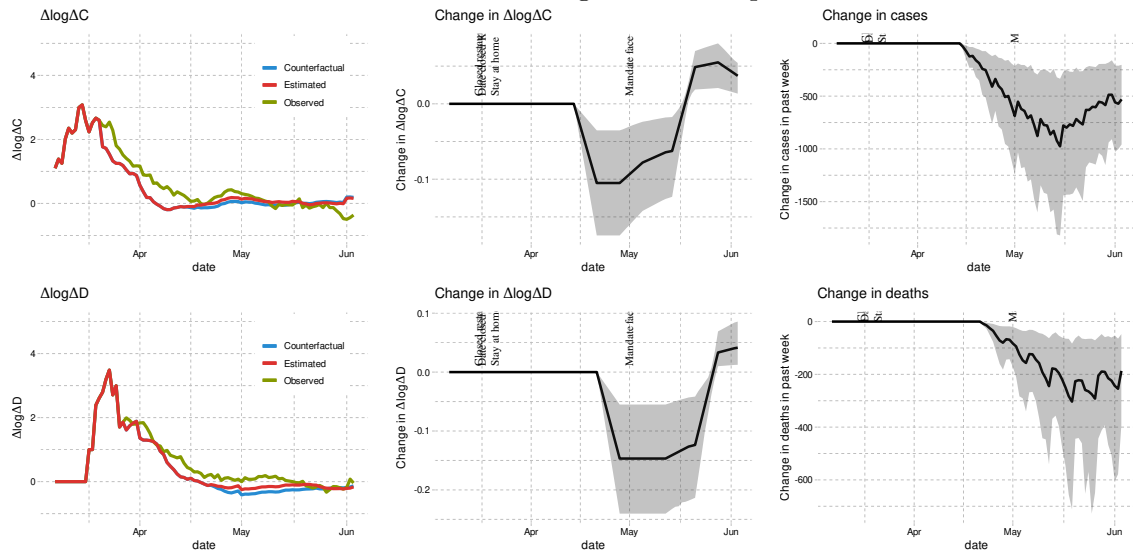
**A.7. Counterfactuals for Massachusetts and Illinois.** Figures 25 and 26 present the fit of estimated cases as well as the counterfactual effect of mandating masks on April 1st in Massachusetts and Illinois, respectively. Figures 27 and 28 show the counterfactual effect of leaving non-essential business open in Massachusetts and Illinois, respectively.

FIGURE 25. Effect of mandating masks on April 1st in Massachusetts



To compute the estimated and counterfactual paths we use the average of two estimated coefficients as reported in column “Average” of table 7. We set initial  $\Delta \log \Delta C$  and  $\log \Delta C$  to their values first observed in the state we are simulating. We hold all other regressors at their observed values. Error terms are drawn with replacement from the residuals. We do this many times and report the average over draws of the residuals. The shaded region is a point-wise 90% confidence interval.

FIGURE 26. Effect of mandating masks on April 1st in Illinois



To compute the estimated and counterfactual paths we use the average of two estimated coefficients as reported in column “Average” of table 7. We set initial  $\Delta \log \Delta C$  and  $\log \Delta C$  to their values first observed in the state we are simulating. We hold all other regressors at their observed values. Error terms are drawn with replacement from the residuals. We do this many times and report the average over draws of the residuals. The shaded region is a point-wise 90% confidence interval.

FIGURE 27. Effect of leaving businesses open in Massachusetts

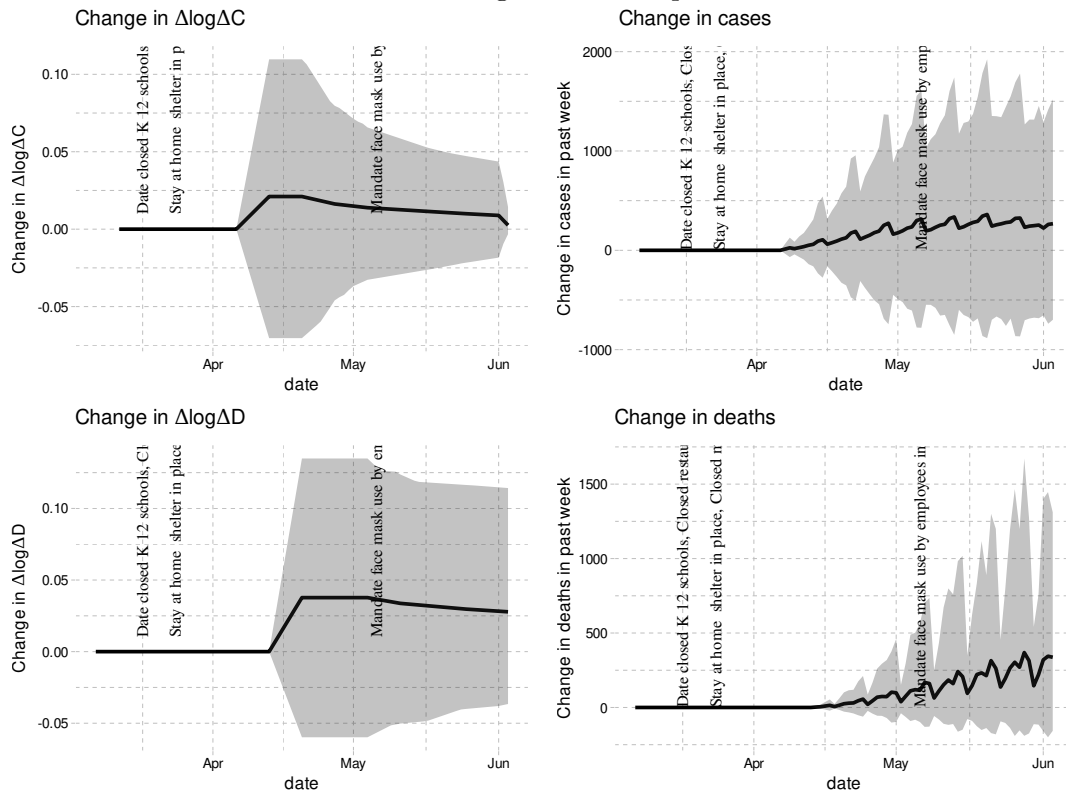
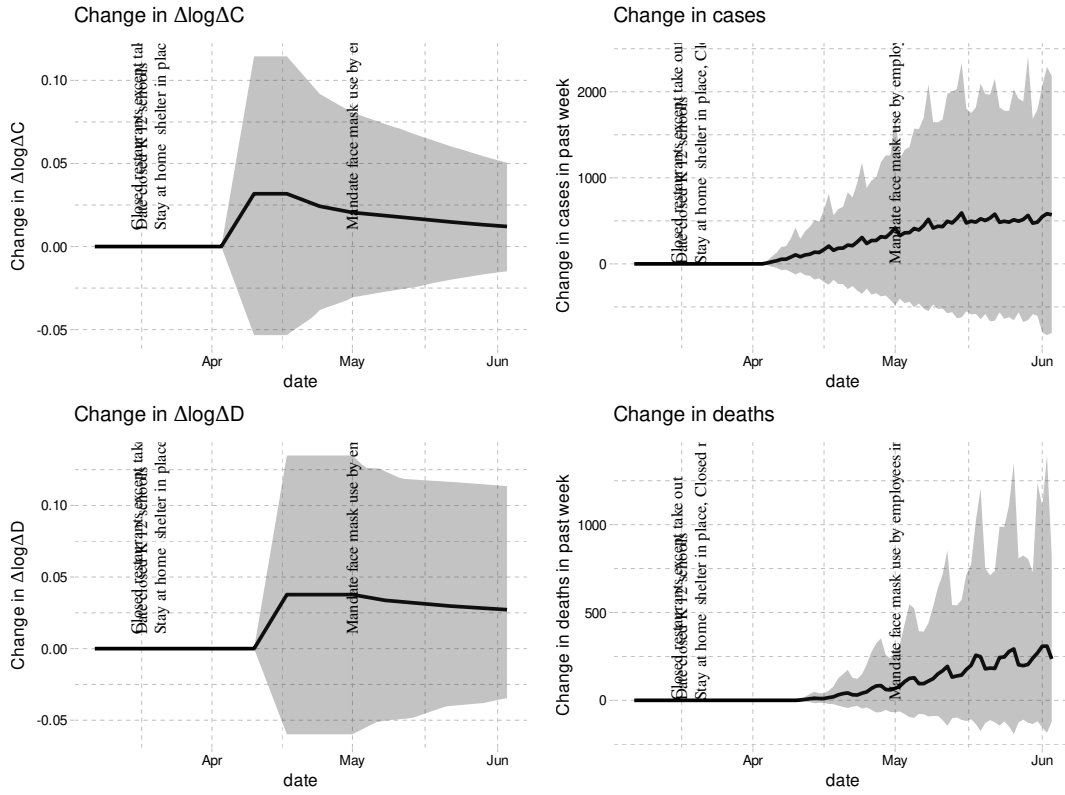




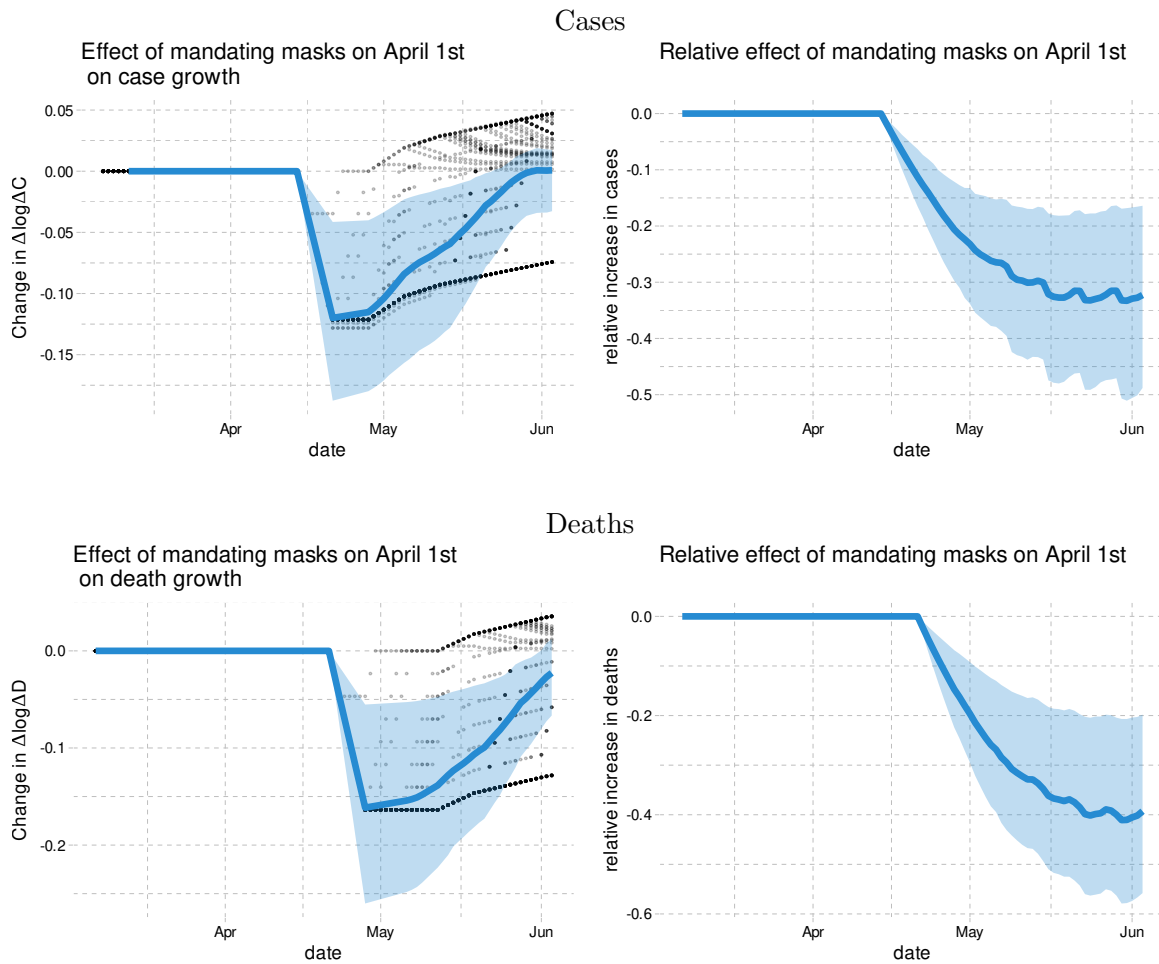
FIGURE 28. Effect of leaving businesses open in Illinois



**A.8. Counterfactuals with National Cases as Information Variables.** Figures 29-31 present the results of counterfactual analyses that include the national cases/deaths as the information variables. To create this figure, we repeat the same counterfactual simulation that we did for Washington with each state. For each state, we hold national cases constant, but endogenize state specific information. Thus, these figures should be interpreted as an average of state specific counterfactuals, and not a national counterfactual.

The counterfactual results of mask policies, shelter-in-place, and closing non-essential businesses remain robust with respect to the inclusion of national case/death variables. This contrasts to the resulting counterfactual of removing all policies discussed in section 6.

FIGURE 29. Effect of mandating masks for employees on April 1st (with national case/death variables)



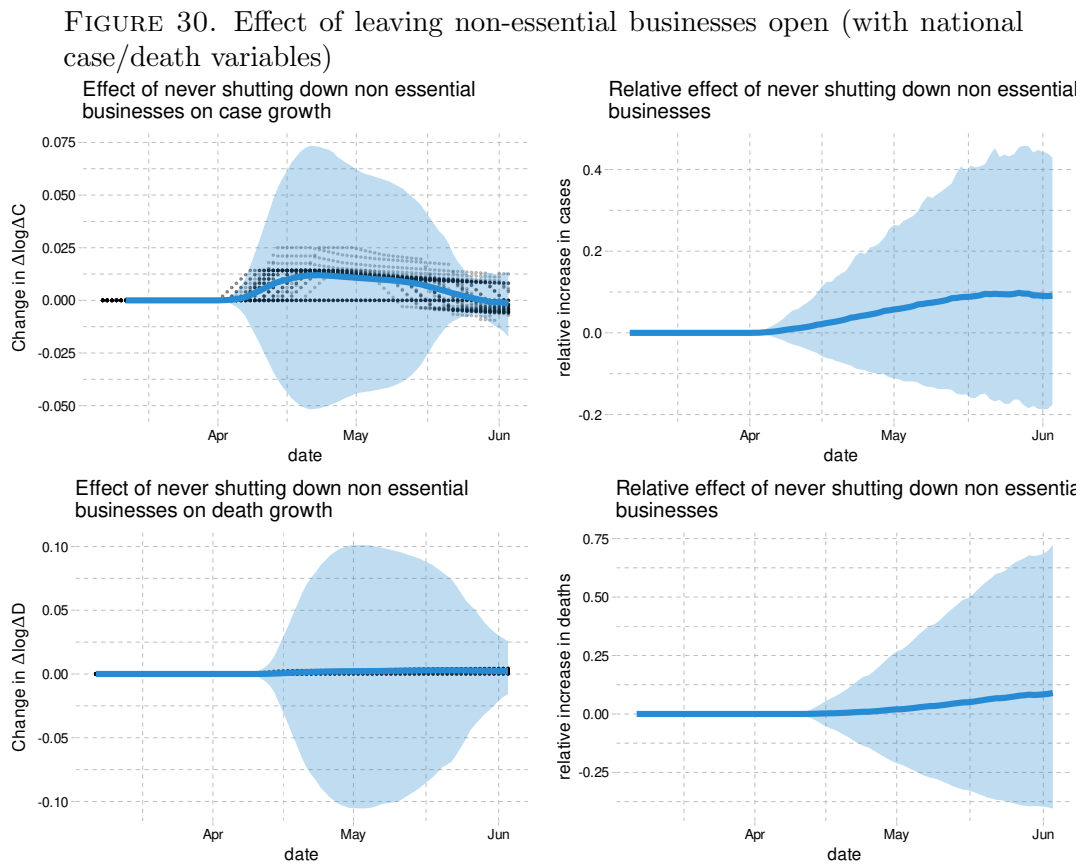
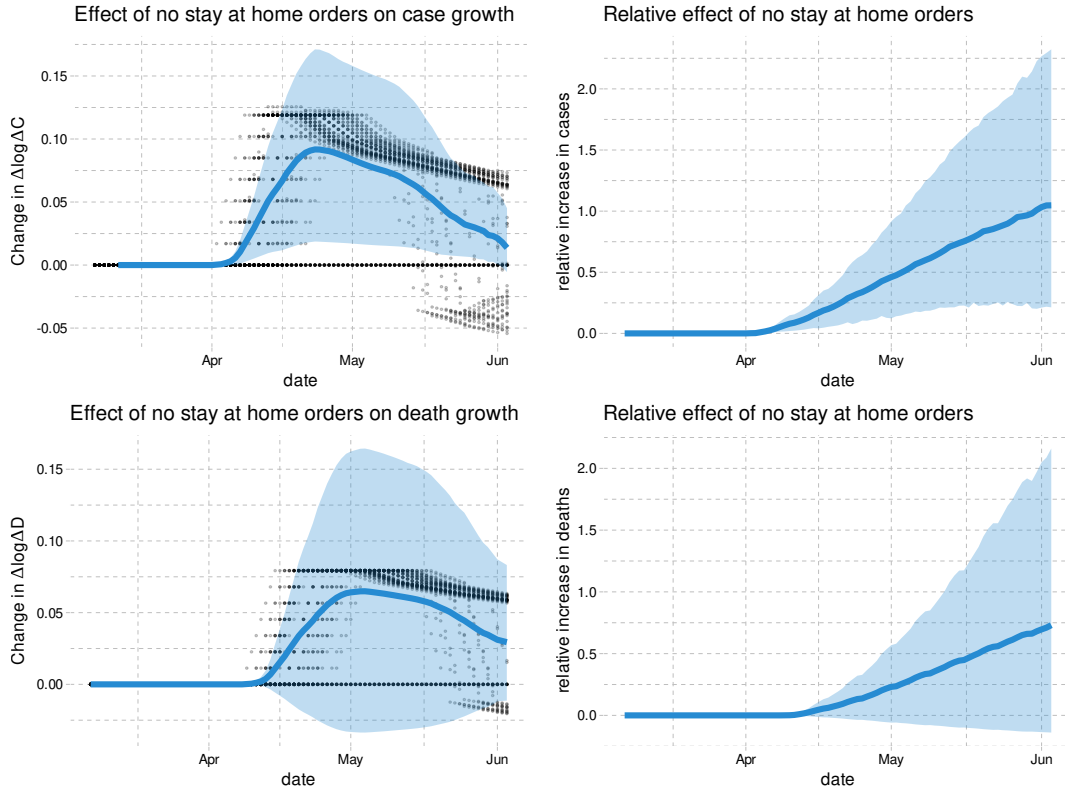


FIGURE 31. Effect of having no stay at home orders (with national case/death variables)



DEPARTMENT OF ECONOMICS AND CENTER FOR STATISTICS AND DATA SCIENCE, MIT, MA 02139

*Email address:* `vchern@mit.edu`

VANCOUVER SCHOOL OF ECONOMICS, UBC, 6000 IONA DRIVE, VANCOUVER, BC.

*Email address:* `hkasahar@mail.ubc.ca`

VANCOUVER SCHOOL OF ECONOMICS, UBC, 6000 IONA DRIVE, VANCOUVER, BC.

*Email address:* `schrumpf@mail.ubc.ca`